



# WEST BUCKLAND SCHOOL


## SCHOOL BUILDINGS

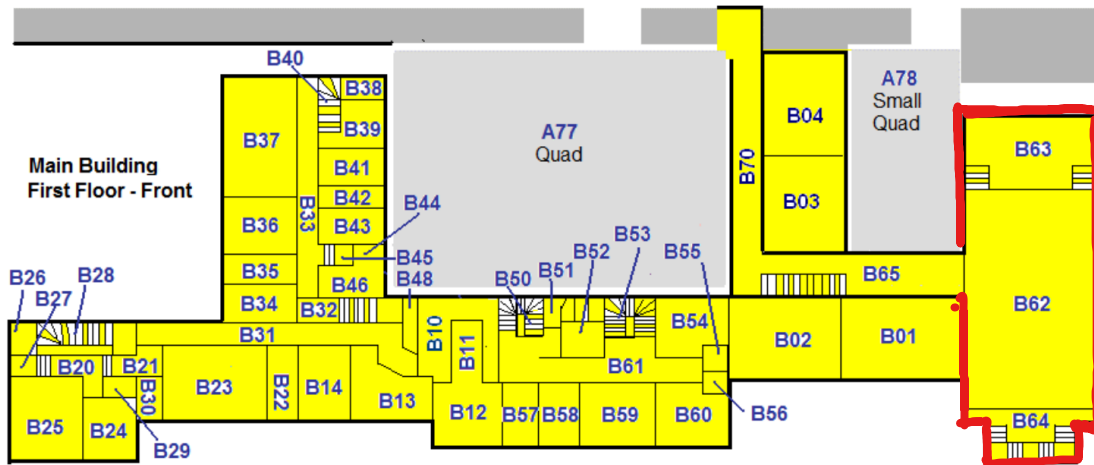
- 1 MEMORIAL HALL
- 2 ORCHARD-LISLE
- 3 LANGHOLME
- 4 DELDERFIELD
- 5 OLD GYMNASIUM
- 6 SWIMMING POOL
- 7 CRICKET PAVILION
- 8 PARKERS
- 9 SYMONDS
- 10 NURSERY
- 11 150 BUILDING
- 12 ROBERTS
- 13 POTBURY
- 14 JUBILEE
- 15 GABLES
- 16 MICHAEL MORPURGO LIBRARY
- 17 BAMFYLDE
- 18 BOYER
- 19 CAFE 58
- 20 HEADMASTER'S HOUSE
- 21 JONATHAN EDWARDS SPORTS CENTRE
- 22 KARSLAKE
- 23 BOYS CHANGING ROOMS
- 24 CCF
- 25 OLD BARN
- TRAFFIC SYSTEM



## Memorial Hall


### Building 1 on main area Plan

 Licenced area outlined in red



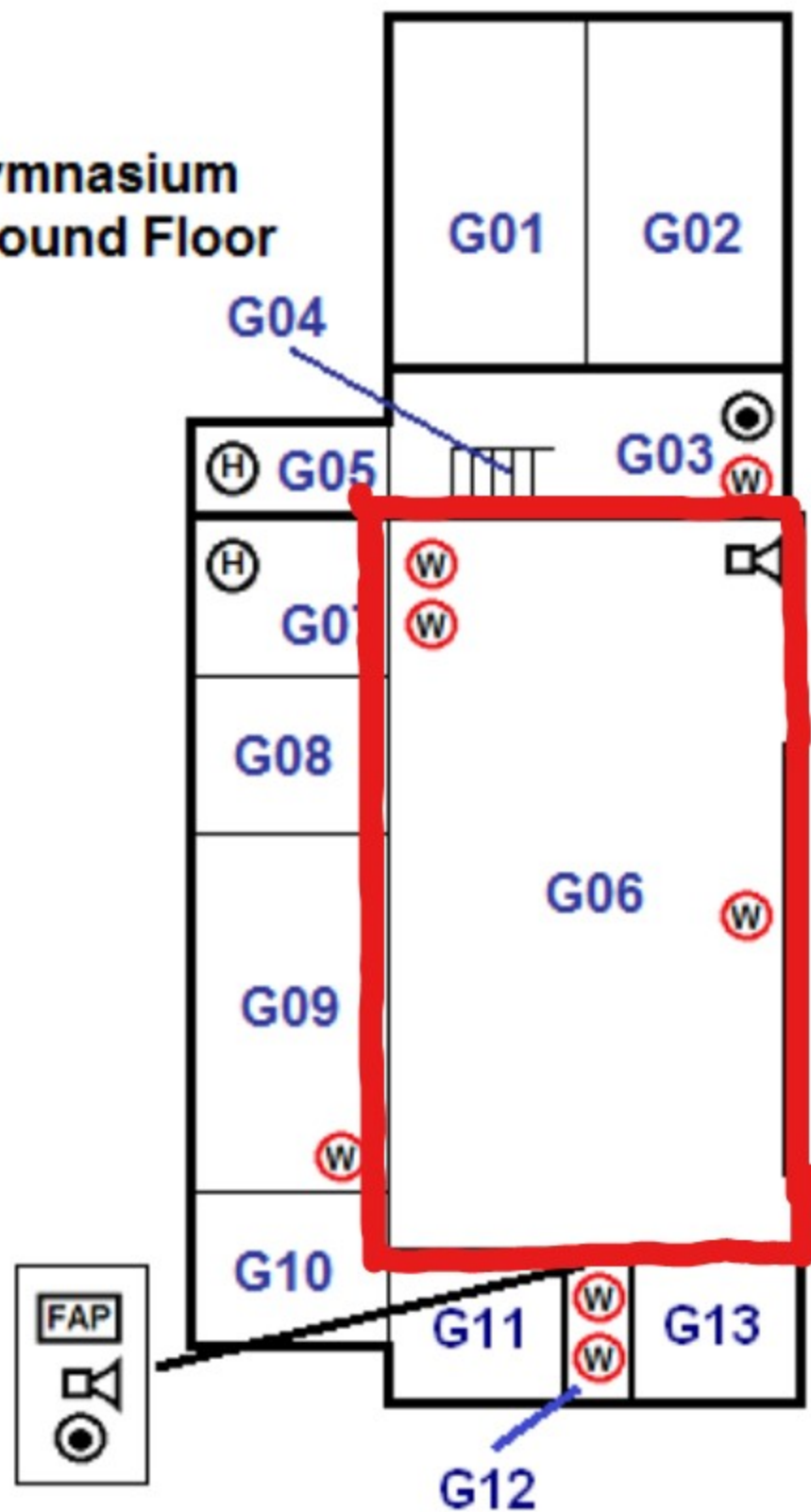
### Old Gymnasium

**Building 5** on main area Plan

 Licensed area outlined in red

- Fire Key**
-  Water Fire Extinguisher
  -  CO2 Fire Extinguisher
  -  Dry Powder Fire Extinguisher
  -  Foam Spray Fire Extinguisher
  -  Wet Chemical Fire Extinguisher
  -  Fire Blanket

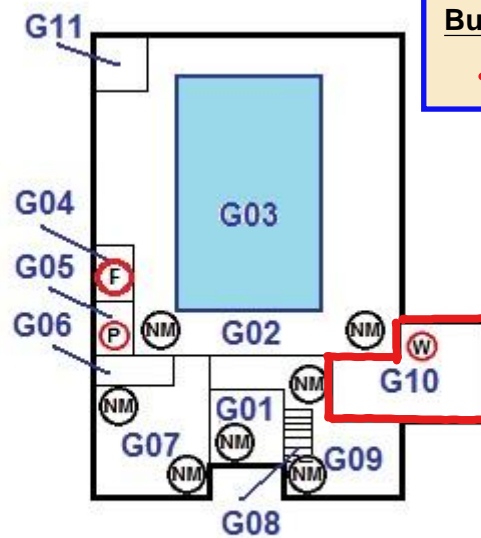
### Gymnasium Ground Floor





# WEST BUCKLAND SCHOOL

## Fire Detection & Fire Fighting Equipment



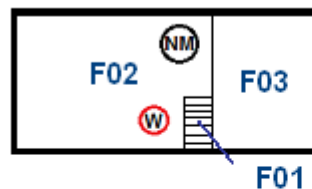
Swimming Pool and Cricket Pavillion  
Ground Floor

### Cricket Pavilion

Building 7 on main area Plan

Licensed area outlined in red

- Fire Key**
- (W) Water Fire Extinguisher
  - (C) C02 Fire Extinguisher
  - (P) Dry Powder Fire Extinguisher
  - (F) Foam Spray Fire Extinguisher
  - (T) Wet Chemical Fire Extinguisher
  - (B) Fire Blanket
  - (SS) Smoke Detector & Sounder
  - (S) Smoke Detector
  - (HS) Heat Detector & Sounder
  - (H) Heat Detector
  - (MCP) Manual Call Point
  - (S) Sounder
  - (SS) Sounder Strobe
  - (FAP) Fire Alarm Panel
  - (I/O) Input/Output Relay
  - (M) Maintained Emergency Light
  - (NM) Non-Maintained Emergency Light



Swimming Pool and Cricket Pavillion  
First Floor

### Fire Service Emergency Information Data

**Main Electrical Isolation - location**

**Building Hazards**

**Chemicals** – located in Plant Room


**Pressurised cylinders** – located external to Plant Room

**Asbestos** – located in gutters/downpipes/internal walls

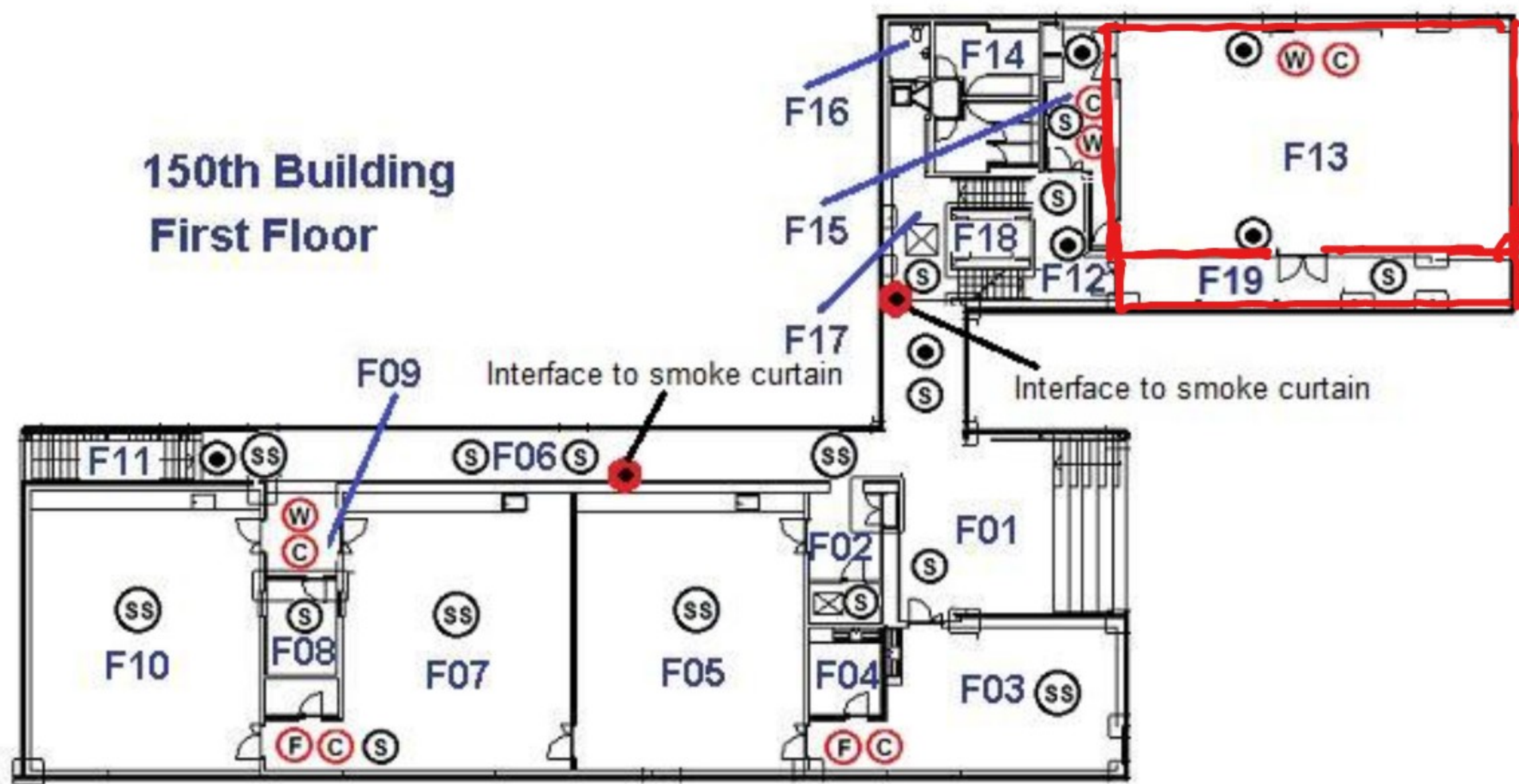


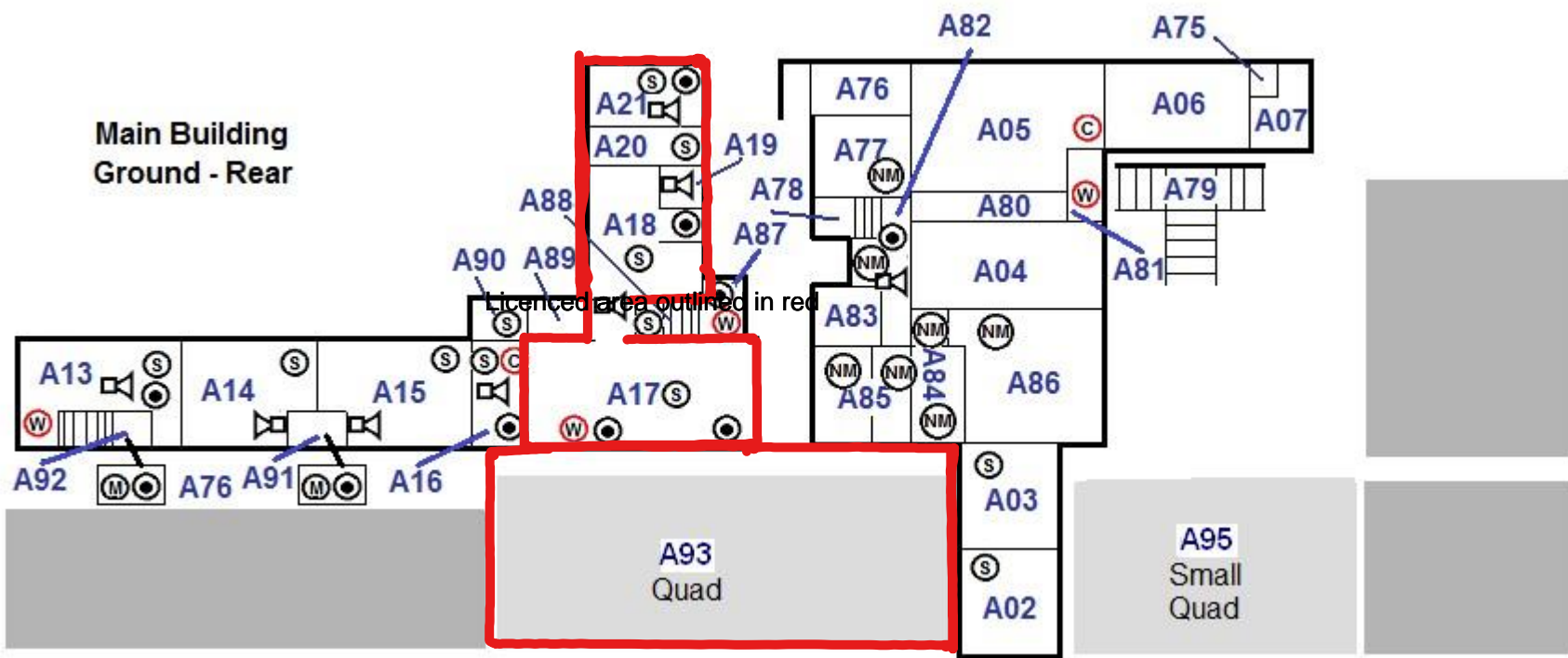
## 150th Building

**Building 11** on main area Plan

 Licenced area outlined in red

## 150th Building First Floor





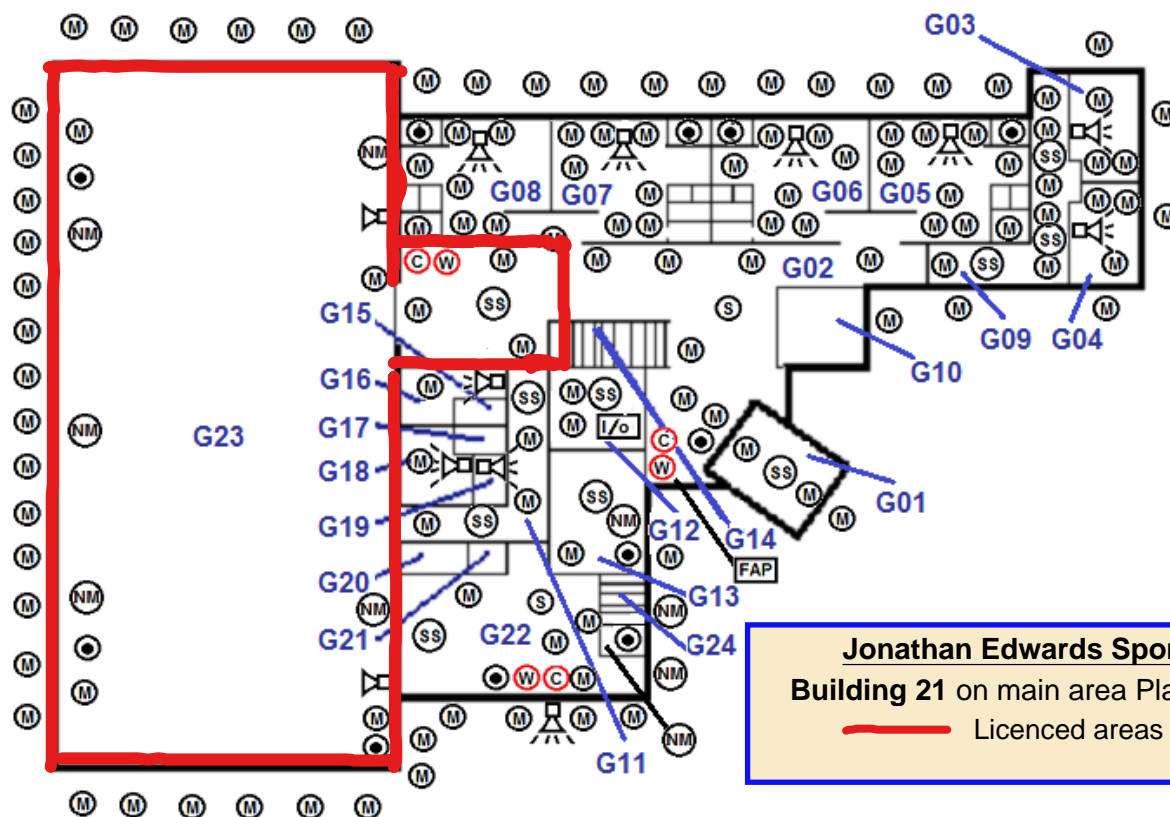
**Cafe and Quad Area**  
**Building 19** on main area Plan  
— Licenced area outlined in red



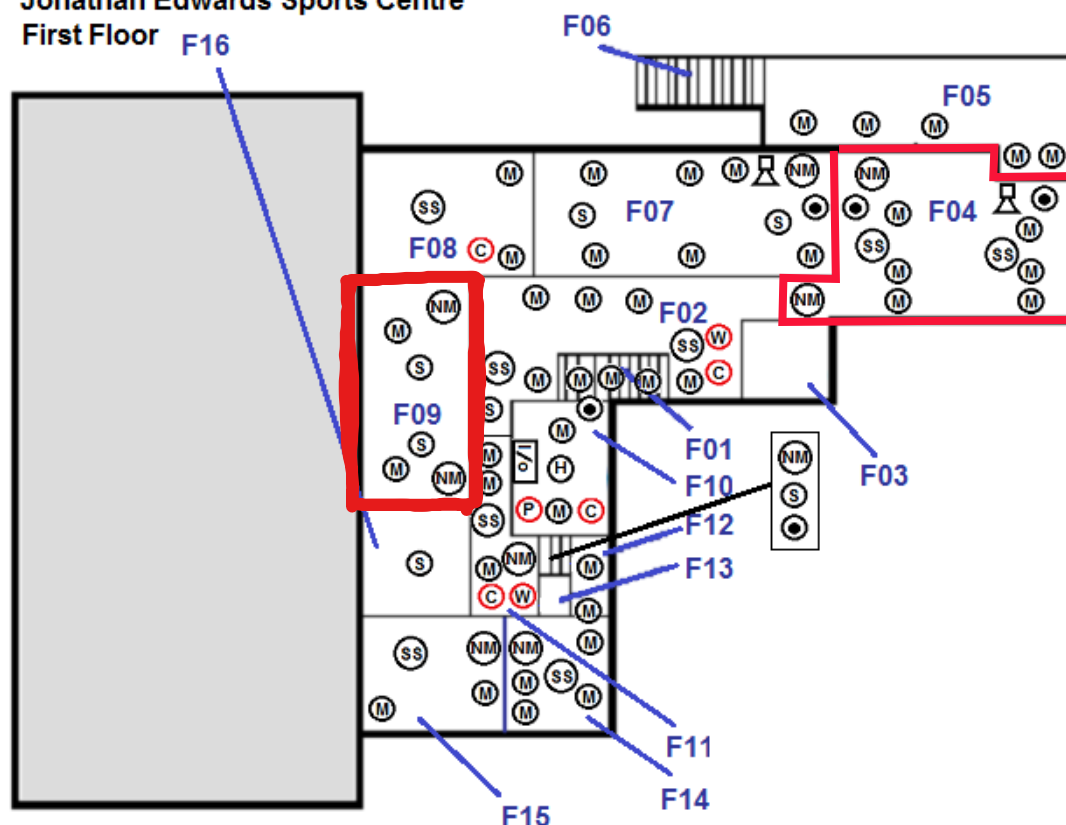
# West Buckland School

## Fire Detection & Fire Fighting Equipment

### Jonathan Edwards Sports Centre Ground Floor



### Jonathan Edwards Sports Centre First Floor



Fire Key	
(W)	Water Fire Extinguisher
(C)	CO2 Fire Extinguisher
(P)	Dry Powder Fire Extinguisher
(F)	Foam Spray Fire Extinguisher
(T)	Wet Chemical Fire Extinguisher
(B)	Fire Blanket
(SS)	Smoke Detector & Sounder
(S)	Smoke Detector
(HS)	Heat Detector & Sounder
(H)	Heat Detector
(MCP)	Manual Call Point
(SND)	Sounder
(SSND)	Sounder Strobe
(FAP)	Fire Alarm Panel
(I/O)	Input/Output Relay
(M)	Maintained Emergency Light
(NM)	Non-Maintained Emergency Light

These Fire devices  
are connected to the  
panel in the main block.

## Karslake Ground Floor

K04

K05

K03



Twin Spot  
Emergency Lighting



K02



K01



K06



**Karslake**  
**Building 22 on main area Plan**  
— Licenced area outlined in red