

# **The North Devon (Off Street Parking Places) (Amendment) Order 2024**

The NORTH DEVON DISTRICT COUNCIL in exercise of its powers under Section 32, Section 35 and Section 35(A) of the Road Traffic Regulation Act 1984 and the Traffic Management Act 2004 and of all other enabling powers, with the consent of the County Council of Devon in accordance with Section 39(3) of the Act and after consulting the Chief Officer of Police in accordance with Part III of Schedule 9 to the Act, hereby makes the following Order:

- 1 This Order may be cited at the North Devon (Off Street Parking Places) (Amendment) Order 2024 and shall come into operation on the date of the Notice of Making of this Order.
- 2 This Order shall amend the North Devon (Off Street Parking Places) Order 2023 (as amended) ("the Existing Order") only so far as contained herein.

**Amendments to the Existing Order shall be as follows: -**

## **PART 8 OF THE EXISTING ORDER (CAR PARKS):**

### **1 BARNSTAPLE**

- 1.1 Albert Lane (Blue Area) –
  - (a) the removal of P7 (permit conditions made available at the time of purchase)
  - (b) the removal of D3 (Monday to Saturday inclusive)
  - (c) the addition of D5 (Charges apply every day)
- 1.2 Lower Pilton
  - (a) the addition of D4 (Monday to Saturday (including Bank Holidays)
  - (b) the removal of D5 (Charges apply every day)
- 1.3 Portland Buildings –
  - (a) the removal of D3 (Monday to Saturday inclusive)
  - (b) the addition of D5 (Charges apply every day)
- 1.4 Rugby Club –
  - (a) the addition of P1 (Virtual and paper tickets are only valid for the period of purchase. Paper tickets must be clearly displayed in the vehicle at all times)

- (b) the removal of P7 (permit conditions made available at the time of purchase)
- (c) the removal of C52 (Permit parking from Monday to Friday)

1.5 Seven Brethren Van and Lorry Park –

- (a) the removal of D3 (Monday to Saturday inclusive)
- (b) the addition of D5 (Charges apply every day)
- (c) the removal of H2 (8.00am to 6.00pm)

1.6 Silver Street Permit Bays –

- (a) the removal of all permits

1.7 Tarka –

- (a) the removal of P7 (permit conditions made available at the time of purchase)

**2. BRAUNTON**

2.1 Caen Field Car Park –

- (a) the charges set out in paragraph 13.5 below

2.2 Caen Street (Main Red Area) –

- (a) the removal of D3 (Monday to Saturday inclusive)
- (b) the addition of D5 (Charges apply every day)
- (c) the charges set out in paragraph 13.7 below

2.3 Caen Street (Blue Overflow Area) –

- (a) the removal of D3 (Monday to Saturday inclusive)
- (b) the addition of D5 (Charges apply every day)
- (c) the charges set out in paragraph 13.7 below

2.4 Chaloners Road –

- (a) the removal of D3 (Monday to Saturday inclusive)
- (b) the addition of D5 (Charges apply every day)
- (c) the charges set out in paragraph 13.7 below

**3 COMBE MARTIN**

3.1 Carmella's Car Park –

- (a) the charges set out in paragraph 13.3 below

- 3.2 Hollands Park –
  - (a) the addition of V18 (No caravans or trailers)
- 3.3 Kiln Car Park –
  - (a) the addition of P1 (Virtual and paper tickets are only valid for the period of purchase. Paper tickets must be clearly displayed in the vehicle at all times)
  - (b) the charges set out in paragraphs 13.1 and 13.4 below
- 3.4 The Parade Car Park –
  - (a) the addition of P1 (Virtual and paper tickets are only valid for the period of purchase. Paper tickets must be clearly displayed in the vehicle at all times)
  - (b) the charges set out in paragraphs 13.1 and 13.4 below

## **4 CROYDE**

- 4.1 Croyde Car Park –
  - (a) the addition of N10 (No sleeping)

## **5 ILFRACOMBE**

- 5.1 Adelaide Terrace –
  - (a) the removal of the whole car park
- 5.2 Brookdale (Lorries and Coaches) –
  - (a) the removal of D3 (Monday to Saturday inclusive)
- 5.3 Cove Car Park –
  - (a) the extension of the car park boundary as per the plan annexed to this Notice
- 5.4 Hele –
  - (a) the removal of D3 (Monday to Saturday inclusive)
  - (b) the addition of D4 (Monday to Saturday including Bank Holidays)
- 5.5 Hillsborough (Cars) –
  - (a) the removal of D3 (Monday to Saturday inclusive)
  - (b) the addition of D5 (Charges apply every day)

- 5.6 Hillsborough (Lorries and Vans) –
- (a) the removal of D3 (Monday to Saturday inclusive)
- 5.7 Marine Drive –
- (a) the removal of the whole car park
- 5.8 Oxford Grove Car Park -
- (a) the extension of the car park boundary as per the plan annexed to this Notice
- 5.9 Ropery Road Car Park –
- (a) the addition of H3 (8:00am to 8:00pm from 15 March to 31 October)

## **6 INSTOW**

- 6.1 Instow Marine Car Park –
- (a) the charges set out in paragraph 13.6 below
  - (b) the removal of H2 (8.00am to 6.00pm)
  - (c) the addition of H22 (8.00am to 10.00pm)

## **7 LYNTON AND LYNMOUTH**

- 7.1 Manor Gardens Roadway –
- (a) the removal of V7 (Motorcars, quad bikes and motorcycle combinations and motor vehicles not exceeding 3,500 kg unladen weight)
  - (b) the removal of V18 (No caravans or trailers)
  - (c) the removal of P11 (No permits or tickets required)
  - (d) the removal of C6 (charges)
  - (e) the removal of D6 (No charges payable on car park for any day)
  - (f) the removal of H8 (10.00am to 6.00pm)
  - (g) the removal of N1 (No parking in designated electric vehicle charging bays unless the vehicle is an electric vehicle or hybrid, and the vehicle is connected to the electric vehicle charging point and is being charged)
  - (h) the removal of N10 (No sleeping)
  - (i) the removal of N13 (Owned and operated by Lynton and Lynmouth Town Council)
  - (j) the addition of H21 (Parking prohibited at any time)
- 7.2 Manor Foreshore –
- (a) the addition of a car park as follows:

<b><u>MANOR FORESHORE</u></b>	<b><u>CODE</u></b>	<b><u>DESCRIPTION</u></b>
<b>CLASS OF VEHICLE</b>	<b>(V7)</b>	Motorcars, quad bikes and motorcycle combinations and motor vehicles not exceeding 3,500 kg unladen weight;
	<b>(V18)</b>	No caravans or trailers
<b>PERMITS AND TICKETS</b>	<b>(P1)</b>	Virtual and paper tickets are only valid for the period of purchase. Paper tickets must be clearly displayed in the vehicle at all times;
<b>CHARGES</b>	<b>(C62)</b>	3hrs - £3.90   6 hrs - £7.80  4hrs - £5.20   7 hrs - £9.10  5hrs - £6.50   8 hrs - £10.00
<b>DAYS OF OPERATION</b>	<b>(D8)</b>	1 July – 31 August plus 28 ad hoc days
<b>HOURS OF OPERATION</b>	<b>(H8)</b>	10.00am to 6.00pm
<b>ANCILLARY MATTERS</b>	<b>(N1)</b>  <b>(N10)</b> <b>(N13)</b>	No parking in designated electric vehicle charging bays unless the vehicle is an electric vehicle or a hybrid, and the vehicle is connected to the electric vehicle charging point and is being charged;  No sleeping;  Owned and operated by Lynton and Lynmouth Town Council

### 7.3 Upper Valley of the Rocks –

- (a) the addition of P21 (Permits available can be purchased at the Town Hall, Lynton)

### 7.4 Watersmeet

- (a) the addition of P21 (Permits available can be purchased at the Town Hall, Lynton)

## 8 SOUTH MOLTON

### 8.1 Central (Long Stay) –

- (a) the removal of D3 (Monday to Saturday inclusive)
- (b) the addition of D4 (Monday to Saturday including Bank Holidays)

- (c) the removal of N10 (No sleeping)
- (d) the addition of N15 (No overnight sleeping)

8.2 East Street –

- (a) the removal of N10 (No sleeping)
- (b) the addition of N15 (No overnight sleeping)

8.3 Lorry and Coach Park –

- (a) the removal of H2 (8.00am to 6.00pm)
- (b) the addition of N9 (All hours)

8.4 Lorry Wash

- (a) the removal of N10 (No sleeping)
- (b) the addition of N15 (No overnight sleeping)

8.5 New Road

- (a) the removal of N10 (No sleeping)
- (b) the addition of N15 (No overnight sleeping)

8.6 Pannier Market –

- (a) the removal of D3 (Monday to Saturday inclusive)
- (b) the addition of D5 (Charges apply every day)
- (c) the addition of N15 (No overnight sleeping)

8.7 Sheep Pen (Short Stay) –

- (a) the removal of D3 (Monday to Saturday inclusive)
- (b) the addition of D4 (Monday to Saturday including Bank Holidays)
- (c) the removal of N10 (No sleeping)
- (d) the addition of N15 (No overnight sleeping)
- (e) the charges set out in paragraph 13.10 below

8.8 Southley Road

- (a) the removal of N10 (No sleeping)
- (b) the addition of N15 (No overnight sleeping)

## **PART 9 OF THE EXISTING ORDER (PERMITS):**

### **9 BARNSTAPLE**

- 9.1 The removal of Albert Lane permits. Reserved parking to be made by arrangement with North Devon District Council
- 9.2 The removal of Tarka permits
- 9.3 The removal of Rugby Club permits  
The removal of Silver Street Reserved permits
- 9.4 The removal of all Evening Resident's permits

### **10 ILFRACOMBE**

- 10.1 The removal of the Ilfracombe Winter permit
- 10.2 The addition of Larkstone Lane to the 4 and 7 Day permits
- 10.3 The removal of Marine Drive from the 4 and 7 Day permits
- 10.4 The addition of Jubilee Gardens and Wilder Road to the Ilfracombe Long Stay permit in the Winter season only (1<sup>st</sup> November – 15<sup>th</sup> March)

### **11 INSTOW**

- 11.1 The increase of the Instow Marine permit to a total of £175.00

### **12 SOUTH MOLTON**

- 12.1 The addition of South Molton Central Car Park to 4 and 7 Day permits
- 12.2 The addition of Sheep Pen Car Park to South Molton Long Stay permits and South Molton Resident's permit

### **13 SCHEDULE ONE OF THE EXISTING ORDER (SCHEDULE OF CHARGES):**

- 13.1 Update C5 to read:  
(Per hour: £1.70 up to 3hrs, 24hrs: £10)
- 13.2 Update C9 to read:  
(Up to 2hrs: £1.00, up to 3hrs: £2.00, Up to 4hrs: £3.00, Up to 5hrs: £4.00, Up to 12hrs: £6.00, Up to 24hrs: £8.00)
- 13.3 Update C10 to read:  
(Up to 2hrs: £1.00, up to 4hrs: £2.00, Up to 12hrs: £6.00, Up to 24hrs: £8.00)
- 13.4 Update C11 to read:

(Up to 1hr: £1.30, Up to 2hrs: £2.60, Up to 3hrs: £3.90, Up to 4hrs: £5.20, Up to 5hrs: £6.50, Up to 6hrs: £7.80, Up to 7hrs: £9.10, Up to 8hrs: £10.40, Up to 9hrs: £11.70, Up to 24hrs: £13.00)

13.5 Update C15 to read:

(1hr: £0.90, 2hrs: £1.70, 3hrs: £2.60, 4hrs: £3.20, 5hrs: £3.70, 6hrs: £4.20, 7hrs: £4.80, 8hrs: £5.30, 9hrs: £6.00)

13.6 Update C16 to read:

(1hr: £1.50, 2hrs: £3.00, 3hrs: £4.50, 4hrs: £6.00, 24hrs: £7.50)

13.7 Update C45 to read:

(30 mins: £0.90, 1hr: £1.70, 2hrs: £2.60, 3hrs: £3.20, 4hrs: £3.70, 5hrs: £4.20, 6hrs: £4.80, 7hrs: £5.30, 8hrs: £6.00)

13.8 Update C50 to read:

(Up to 1hr: £0.80, Up to 2hrs: £1.50, All day: £2.50)

13.9 The removal of C58 (£120 per annum for Adelaide Terrace Resident's Association Only)

13.10 Update C61 to read:

(Up to 1hr: £0.60, Up to 2hrs: £1.20, Up to 3hrs: £1.80, Up to 24hrs: £2.50)

13.11 The addition of C62:

(3hrs: £3.90, 4hrs: £5.20, 5hrs: £6.50, 6hrs: £7.80, 7hrs: £9.10, All Day: £10.00)

**14 SCHEDULE THREE OF THE EXISTING ORDER (HOURS OF OPERATION OF THE SCALE OF CHARGES):**

14.1 Update H3 to read:

8.00am to 8.00pm from 15 March to 31 October

14.2 The addition of H22 to read:

8.00am to 10.00pm

**15 SCHEDULE FIVE OF THE EXISTING ORDER (PERMITS AND TICKETS):**

15.1 The addition of P21 (Permits available can be purchased at the Town Hall, Lynton)

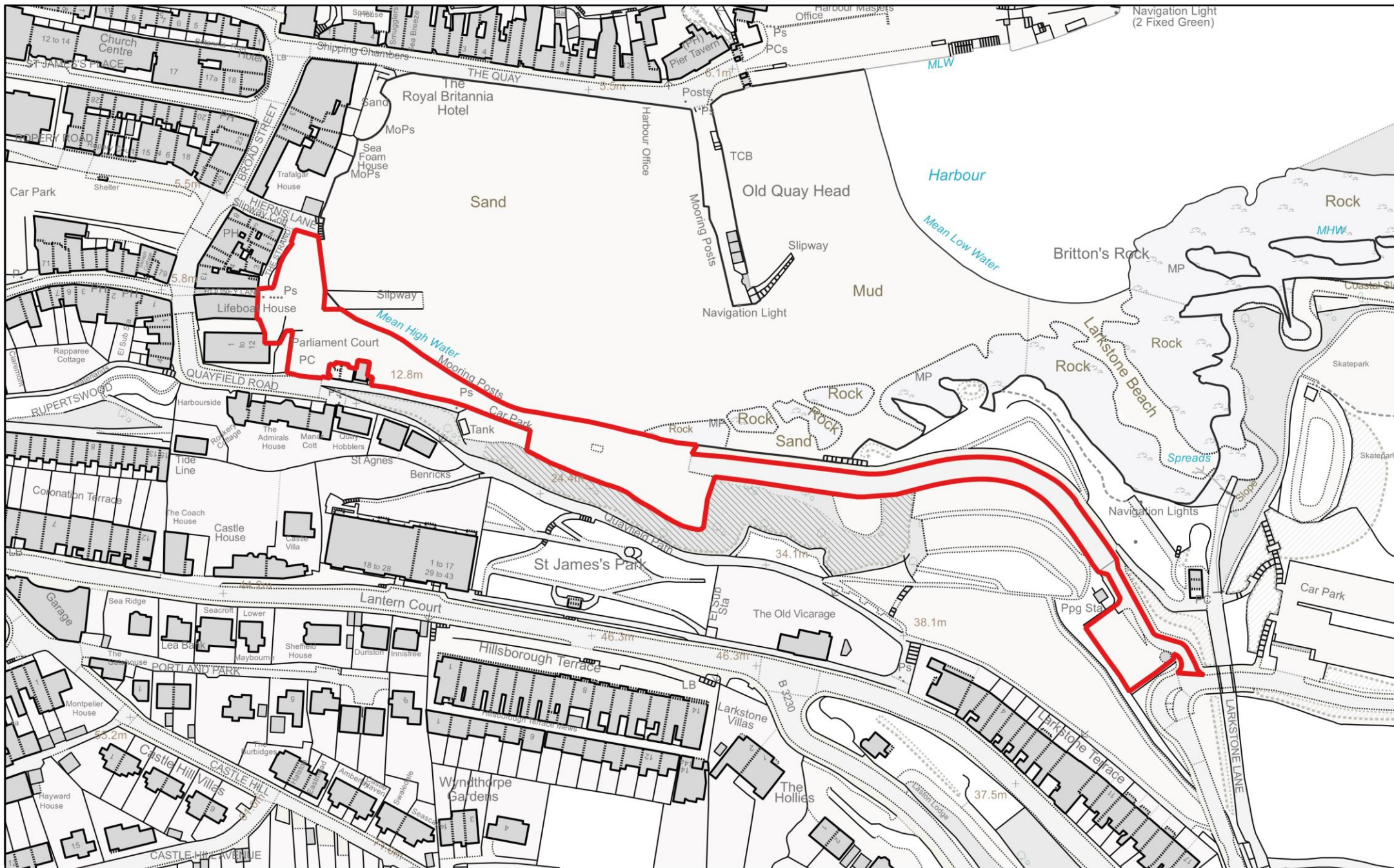
**16 SCHEDULE SIX OF THE EXISTING ORDER (ANCILLARY MATTERS):**

16.1 The addition of N15 (No overnight sleeping)



## **17 PLANS**

- 17.1 The plans for Cove Car Park and Oxford Grove Car Park to be replaced with those attached to this Order.



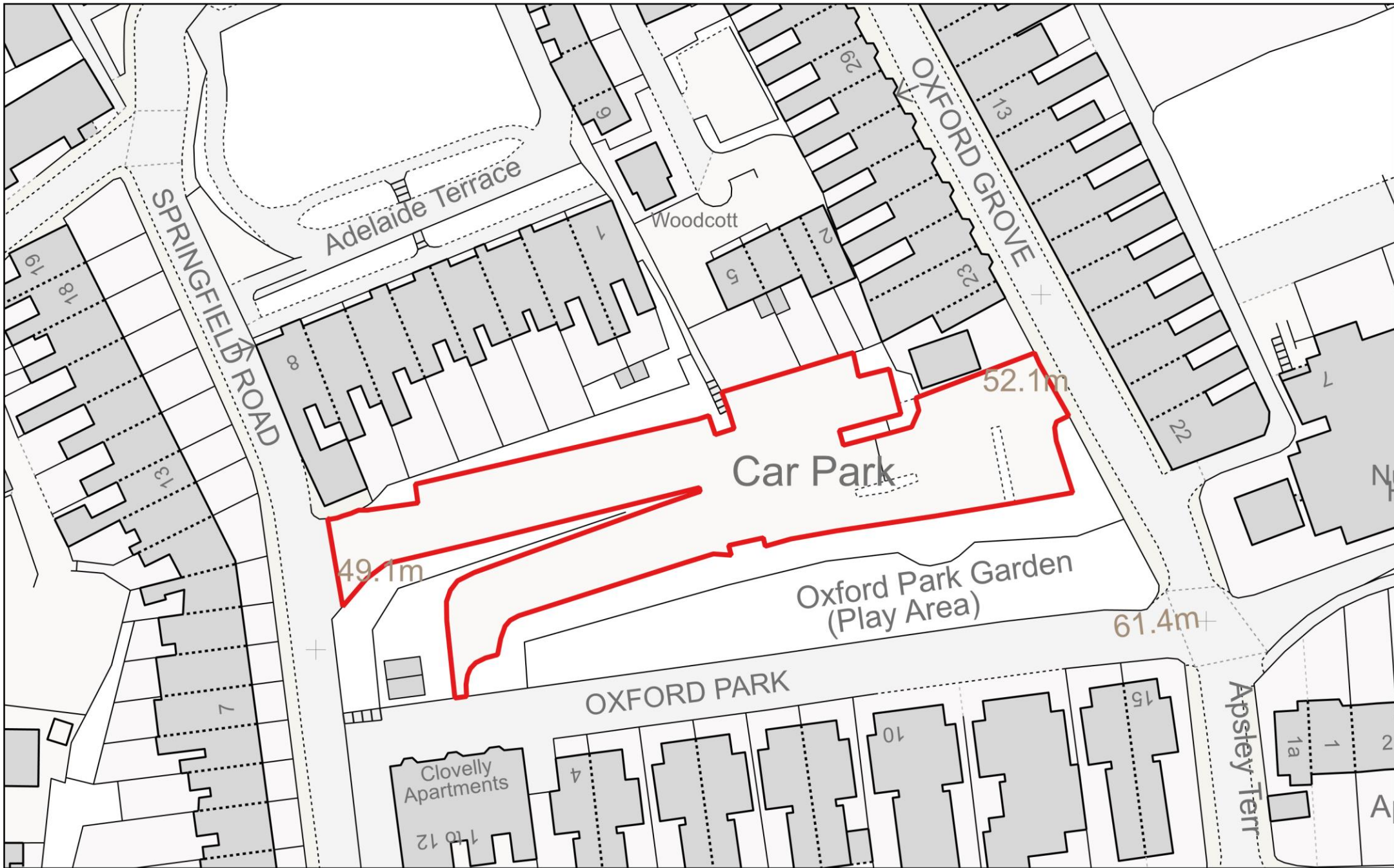
## Cove Car Park

Lynton House, Commercial Road,  
Barnstaple, EX31 1EA

Scale: 1:2000  
Date: 16/02/2024

© Crown copyright and database rights 2023 OS 100021929. You are permitted to use this data solely to enable you to respond to, or interact with, the organisation that provided you with the data. You are not permitted to copy, sub-license, distribute or sell any of this data to third parties in any form





Lynton House, Commercial Road,  
Barnstaple, EX31 1EA

## Oxford Grove Car Park

Scale: 1:750  
Date: 16/02/2024