

Northern Devon Playing Pitch Strategy

APPENDICES

August 2017

FINAL STRATEGY DOCUMENT NORTHERN DEVON PLAYING PITCH STRATEGY

FINAL ACTION PLANS NORTHERN DEVON PLAYING PITCH STRATEGY

FINAL EXECUTIVE SUMMARY NORTHERN DEVON PLAYING PITCH STRATEGY

INDIVIDUAL SITE SUMMARIES

prepared by

belap
bennett leisure & planning in association with



CONTENTS

Appendix 1:	Scenario Testing	3
Appendix 2:	Ensuring provision and availability of appropriate facilities to meet demand to 2031 in North Devon and Torridge	15
Appendix 3:	Priority Projects/Sites in North Devon and Torridge: Explanation of the Issues	19
A	Provision of 3G FTP in Barnstaple	19
B	Football in Barnstaple	21
C	Rugby in Barnstaple	22
D	Football in Fremington	22
E	Football, rugby and cricket in Ilfracombe	23
F	Facilities for hockey in North Devon	24
G	3G FTP provision in Bideford	25
H	Bideford RFC and King George V Playing Fields, Bideford	26
I	Football in Bideford and Northam	27
J	New ground for Bideford, Littleham & Westward Ho! CC	28
K	Facilities for rugby and football in South Molton	29

APPENDIX 1 SCENARIO TESTING

Consideration of various scenarios

1.1 Having presented the key findings and issues relating to the analysis of supply and demand it is possible to look at what projects could help to resolve these issues. This may include (but not be limited to) improving existing sites, providing additional sites, relocating clubs to share sites and re-designating existing sites to cater for different sports.

1.2 Scenario testing considers what will happen if certain changes to supply or demand occur. The Playing Pitch Methodology sets out a series of example scenario questions and these have been adapted below to consider certain specific scenarios in North Devon and Torridge.

A What if certain sites with a poor quality rating are improved?

1.3 Under the Sport England methodology, playing pitches are visually assessed on a number of criteria, including the quality of the surface, the maintenance and ancillary facilities. Scoring places each pitch within a 'good', 'standard' or 'poor' category. The following pitches with secure community access were assessed as being poor (i.e. scoring less than 50%). (This means that they can only accommodate one game per week).

Table 1: Poor quality rated sites in North Devon

Sub area	Site Name	Pitch types rated as poor	At/near capacity	Notes
Barnstaple	Landkey (Tanners Road)	Football: Adult. Poor pitch due to drainage and molehills	Does not seem to sustain much use	Used by Eastside Youth FC – see below
Barnstaple	Park Community School	Football: Mini 7v7 pitch, poor as sloping	Yes; has community use from Eastside Youth FC on Sunday mornings	Would be difficult to 'correct' slope; but would give better playing experience. Club use as much as they can.
Barnstaple	The Park Community School	Rugby: Inadequate drainage/acceptable maintenance	No community use; only marked out for part of school year	No demand expressed
Barnstaple	Pilton Community College & Rock Park	Cricket: Non turf wickets – poor quality	No community use	No demand expressed.
Barnstaple	Pilton Community College	Rugby: Inadequate drainage/acceptable maintenance	No community use. Pitches lie on floodplain and not really suitable	No demand expressed
Braunton	RMB Chivenor	Cricket: Non turf wicket – poor quality	No further details	
Braunton	Braunton Academy	Rugby: Inadequate drainage/acceptable	No community use	No demand expressed

Sub area	Site Name	Pitch types rated as poor	At/near capacity	Notes
		maintenance		
Ilfracombe	Killacleave (Ilfracombe Academy)	Cricket: Non turf wicket – poor quality	No use	No demand expressed
South Molton	Chulmleigh Community College	Football: Junior 9v9: poor surface, often waterlogged	Poor quality pitch and no community use as a result.	See below
South Molton	Chulmleigh Community College	Rugby: Inadequate drainage/acceptable maintenance	No community use	No demand expressed
South Molton	South Molton Community College	Cricket: Non turf wicket – poor quality	No use	No demand expressed
South Molton	South Molton Community College	Rugby: Inadequate drainage/acceptable maintenance	Rugby pitch is used as overflow facility for South Molton RFC juniors & minis for training and matches...so probably being overplayed	See below
South Molton	South Molton RFC: Station Road	Rugby: Inadequate drainage/acceptable maintenance. Lower lying pitch with clay based soil on flood plain. There is a big drainage issue.	One of two club adult pitches; sustaining 4 adult teams.	See below

1.4 The pitches where improving quality from poor to standard in North Devon would make a quantifiable contribution to meeting expressed demand are:

- Tanners Road, Landkey (football): Improving this pitch would enable it to accommodate more Eastside Youth teams. However, club is principally based at The Park School and unlikely that it could make this pitch its main site as will still not have enough capacity for all youth teams.
- Chulmleigh Community College (football): Would be useful additional facility in the town. Chulmleigh Youth FC have expressed interest; could accommodate up to 4 youth teams if improved.
- South Molton RFC, Station Road (rugby): Improving drainage would enable club to accommodate its teams without undue damage to the pitch. In practice pitch is probably being overplayed already. A new pitch is being provided for the club this year.
- South Molton Community College (rugby): Would assist club and school if drainage improved as would improve playing experience and enable more matches to be played. This pitch can still serve as a useful additional facility for the rugby club, even though a new pitch is now being provided.

Table 2: Poor quality rated sites in Torrridge

Sub area	Site Name	Pitch types rated as poor	At/near capacity	Notes
Bideford	Bideford College	Cricket: Non turf wicket – poor quality	No use	No demand expressed
Great Torrington	Great Torrington School	Cricket: Non turf wicket – poor quality	No use	No demand expressed
Great Torrington	Great Torrington School	Half size floodlit 3G – poor	Spare capacity in week and at weekends	Being refurbished
Great Torrington	Dolton Playing Field	Adult football Scores poor due to lack of maintenance.	No community use	Rural village pitch does not appear to be currently used.
Holsworthy	Stanhope Park	Junior pitch 9v9 irregular size. severe sideways slope, worn goalmouths and peculiar dimensions add up to make this a poor pitch.	Yes, considering quality	If pitch was improved could accommodate more play but difficult, and in public recreation ground.
Holsworthy	Holsworthy Community College	Cricket: Non turf wicket – poor quality	No use	No demand expressed
Holsworthy		Half size floodlit sand based AGP – poor	Spare capacity in week and at weekends	

1.5 There are no grass pitches identified at present in Torrridge where improving quality from poor to standard would make a quantifiable contribution to meeting expressed demand. Improving the quality of the two AGPs at Great Torrington School (3G) and Holsworthy Community College (sand based) would mean they could cater for more training in football and other appropriate sports, and in the case of the former, possibly accommodate some mini matches.

B What if community use can be secured at certain sites?

1.6 There are a number of schools and private facilities that have sports pitches that are not available for secured community use. The methodology states that “as a guide there should be a good degree of certainty that the pitch will be available to the community for at least the following three years...arrangements which may suggest such certainty could include:

- a formal community use agreement (cua);
- a leasing or management agreement requiring pitches to be available to the community/a community club;
- a formal policy for community use adopted by the owner and or educational establishment; and
- written confirmation from the owner and or educational establishment”.

1.7 The accepted classification for community use sites is:

- A Available for community use and used
- B Available for community use and unused
- C Not available for community use, as matter of policy and practice
- D Not available as disused. Any sites where pitches were once, but are no longer marked out and remain undeveloped.

1.8 However, in practice, it is difficult to distinguish between B and C – if a pitch is not used, is it because it is definitely not available, or is it because there is not the demand for it and therefore whether it could be made available or not has not been tested?.

1.9 Moreover, it is virtually impossible to determine if formal written agreements or policies are in place, other than where they exist for artificial turf pitches in the study area i.e. at the full size AGP at the Park School, Barnstaple AGP, and for the half size AGPs on school sites at Pilton, Braunton, South Molton, Chulmleigh, Holsworthy, Ilfracombe and Great Torrington. The only formal CUA for grass pitches is at Ilfracombe Academy 9v9 pitch at Worth Road.

1.10 In all sub areas, grass football pitches at schools are an integral and essential part of the stock and use should be secured via CUAs. As follows:

Football – North Devon

Barnstaple sub area

- Out of 12 sites for football: 4 are on school sites: Petroc College (1 adult with community use), Pilton Community College (2 junior pitches, not available for community use); The Park School (one junior 11v11, available for community use but not used; 1 mini 7v7 with community use) and Sticklepath Primary School (2 junior 7v7 pitches combined makes 1 x 9v9 pitch with community use).

Braunton sub area

- There are two football/rugby pitches on the school site (Tweedies) but these are not available for use by the community because of use changing during the year.

Ilfracombe sub area:

- Out of 5 sites for football, 2 are on school sites and both of these belong to Ilfracombe Academy: a 9v9 pitch on Worth Road site, which has a community use agreement but is not used and Killacleave with 2 adult pitches, fully used by local teams.

South Molton sub area:

- Out of 7 sites for football, 2 are at schools – Chulmleigh Community College 1 x 9v9 junior pitch which is not used and 2 x 9v9 pitches at South Molton Community College, which are also not used (both categorised as C).

Football - Torrington

Bideford sub area:

- 13 football sites in use: 2 schools – Bideford College – one adult pitch with community use and Kingsley School, no community use on a junior and mini pitches (C).

Great Torrington sub area:

- 7 football sites: one school, Great Torrington, has adult football and junior football – no recorded community use.

Holsworthy sub area:

- 8 sites in use – 2 schools – Holsworthy 1 x 9v9 pitch, and Shebbear College (extensive playing fields).

Cricket

- The only cricket facilities on state school sites are non-turf wickets, many of which are in a poor condition, and none are used by community teams.
- The only evidence of any cricket pitches at schools in use is at Shebbear College, which has extensive grass pitches and apparently caters for one cricket team from outside Torrington.

Rugby

- Although most secondary schools have rugby pitches, the only school which caters for community use (for which it is essential and has a good relationship with the club) is South Molton Community College (used by South Molton RFC).

Artificial Turf Pitches

1.11 Schools sites are critical for artificial turf pitch provision in Northern Devon and any restrictions on community use would have severe implications for football, rugby and hockey:

- The only two full size floodlit artificial turf pitches with community use are at The Park School Barnstaple (sand based) and Bideford College (3G FTP). Of the remaining 4 (almost) full size floodlit AGPs in the study are, 3 are on independent school sites (1 has community use) and the other is at RMB Chivenor (MoD).
- Of 7 half size artificial turf pitches, all are on school, sites apart from Sandymere (Bideford Blues and Appledore FC).

C What if there is a necessary demand to move some current demand to a different pitch type?

1.12 There is an increasing movement towards training on 3G surfaces for football and rugby.

Football Training

1.13 The Needs Assessment demonstrated that a high proportion of clubs train on artificial surfaces, both 3G and sand based. In some areas there are only sand based

facilities (Barnstaple, Holsworthy), and it is reasonable to assume that teams would prefer to play on 3G if such a surface is available. The Needs Assessment found that there is demand from many clubs who are not using 3G surfaces at present to use them if they were available.

1.14 As a guide the FA suggest that 1 full size FTP could potentially accommodate the training demand from 42 teams (Ratio of 1:42). The information from the Assessment stage of this PPS indicates that there are 114 teams playing competitive football in North Devon and 82 in Torridge. Therefore, using the FA's 1: 42 ratio suggests that 2.7 full size floodlit 3G AGPs would be required to meet this increased training use within North Devon and 1.8 in Torridge.

1.15 This does not take into account sand based provision which also caters for football training and existing provision (both the full size 3G FTP as at Bideford College and smaller sized 3G pitches). Allowing for these facilities, according to the modelling, an additional full size 3G FTP may be required in Bideford and a full size 3G FTP is required in Barnstaple to meet demand for training.

Football Matchplay

1.16 Although the amount of training impacts on a site's capacity, it is accommodating matchplay which ultimately determines how many football pitches are required. Here, the only acceptable artificial grass surface for football matches is 3G and pitches must be accredited for matchplay by the FA. At present, out of 5 smaller size 3G FTPs in North Devon and Torridge (Great Torrington, Sandymere, South Molton, Braunton and Ilfracombe) only Sandymere hosts matchplay for 7v7 and 5v5. The only full size 3G - Bideford College - is not currently on the FA Register for matchplay.

1.17 The rate at which matches may transfer from grass to artificial turf pitches in North Devon and Torridge will depend on many factors which are difficult to quantify at present but include:

- whether Bideford AGP can become FA accredited and becomes accessible for matchplay at weekends
- cost of matchplay
- whether convenient session times are available

1.18 The FA has a model to calculate the number of 3G pitches required for matchplay, based on the number of teams requiring to be accommodated at peak time.

1.19 For Barnstaple and Braunton, this computes as follows (Braunton's population is included as the settlement lies within a 20 minute catchment area of Barnstaple and does not have a full size 3G FTP):

Table 3: Likely demand for 3G FTPs for matchplay in Barnstaple and Braunton

	Format	No. of teams per time	No. matches at PEAK TIME	3G units per match	Total units required formats	3G pitches required
		(x)	(y) = x/2	(z)	(A) = (y)*(z)	B = (A)/64
A	5v5	8	4 (Sun am)	4	16	0.25
B	7v7	6	3 (Sun am)	8	24	0.38
C	9v9	11	5.5 (Sun am)	10	55	0.86
D	11v11 (Y)	15	7.5 (Sun am)	32	240	3.75
E	11v11 (A)	21	10.5 (Sat pm)	32	336	5.25

Table 4: Likely demand for 3G FTPs for matchplay in Bideford

1.20 The findings for Bideford are as follows:

	Format	No. of teams per time	No. matches at PEAK TIME	3G units per match	Total units required formats	3G pitches required
		(x)	(y) = x/2	(z)	(A) = (y)*(z)	B = (A)/64
A	5v5	3	1.5 (Sun am)	4	6	0.1
B	7v7	7	3.5 (Sun am)	8	28	0.44
C	9v9	3	1.5 (Sun am)	10	15	0.23
D	11v11 (Y)	14	7 (Sun am)	32	224	3.5
E	11v11 (A)	13	6.5 (Sat pm)	32	208	3.25

1.21 It is possible to adapt the above modelling to examine various scenarios, including the current target set by the FA (for larger urban areas where demand is concentrated) to have 50% of mini and junior football played on artificial surfaces by 2020. There is existing spare capacity for mini football matches on the 3G FTPs in Braunton, South Molton, Ilfracombe and Great Torrington but because of the distances involved, this will only cater for localised demand (i.e. not from Barnstaple or Bideford).

1.22 To estimate the number of AGPs required to accommodate 50% of mini and junior football by 2020, the increase/total of numbers of mini and junior teams to 2020 has been estimated (the Strategy increase is to 2031 however, so assumptions have been made around numbers of teams by 2020 as this is only 3 years' away).

Barnstaple and Braunton

1.23 The calculations are as follows:

Predicted increase of: 2 x 11v11 Youth, 2 x 9v9 Youth, 1 x 7v7 Mini and 1 x 5v5 mini teams

Making IN TOTAL: 17 x 11v11 Youth; 13 x 9v9 Youth, 7 x 7v7 Mini and 9 x 5v5 Mini
Divide by 50%: 8.5 x 11v11 Youth; 6.5 x 9v9 Youth; 3.5 x 7v7 Mini and 4.5 x 5v5 Mini

Table 5: Likely demand for 3G FTPs for matchplay in Barnstaple and Braunton: if 50% of junior and mini matches being played on 3G FTPs by 2020

	Format	No. of teams per time	No. matches at PEAK TIME	3G units per match	Total units required formats	3G pitches required
		(x)	(y) = x/2	(z)	(A) = (y)*(z)	B = (A)/64
A	5v5	4.5	2.25 (Sun am)	4	9	0.14
B	7v7	3.5	1.75 (Sun am)	8	14	0.22
C	9v9	6.5	3.25 (Sun am)	10	32.5	0.50
D	11v11 (Y)	8.5	4.25(Sun am)	32	136	2.125

Bideford/Northam

1.24 The calculations are as follows:

Predicted increase of 1 x 11v11 Youth, 2 x 9v9 Youth, 1 x 7v7 Mini and 1 x 5v5 mini
Making IN TOTAL: 15 x 11v11 Youth; 5 x 9v9 Youth, 8 x 7v7 Mini and 4 x 5v5 Mini
Divide by 50%: 7.5 x 11v11 Youth; 2.5 x 9v9 Youth; 4 x 7v7 Mini and 2x 5v5 Mini

Table 6: Likely demand for 3G FTPs for matchplay in Bideford/Northam: if 50% of junior and mini matches being played on 3G FTPs by 2020

	Format	No. of teams per time	No. matches at PEAK TIME	3G units per match	Total units required formats	3G pitches required
		(x)	(y) = x/2	(z)	(A) = (y)*(z)	B = (A)/64
A	5v5	2	1 (Sun am)	4	4	0.63
B	7v7	4	2 (Sun am)	8	16	0.25
C	9v9	2.5	1.25 (Sun am)	10	12.5	0.20
D	11v11 (Y)	7.5	3.75 (Sun am)	32	120	1.88

1.25 The above tables suggest that to accommodate 50% of junior and mini matchplay by 2020, just over two full size 3G FTPs are required in the Barnstaple/Braunton sub areas and just under two full size 3G FTPs in the Bideford sub area.

C What if there is a reduction in the maintenance budget for some sites?

1.26 This issue is affecting local authorities, town and parish councils and schools. Many clubs in all sports struggle to afford to do as much maintenance as they would like to already, and if past trends continue this issue is likely to be exacerbated.

1.27 A reduction in maintenance budgets is likely to result in a decline in the quality of the pitches which then affect their capacity (i.e. if a pitch declines in quality from 'good' to 'standard' or from 'standard' to 'poor'.) Standard rated sites are particularly vulnerable as if they become 'poor' they may no longer be able to sustain their current level of matchplay at peak time.

1.28 As some indication, the annual cost per pitch for maintenance by North Devon Council is approximately £3470, of which £1230 is for cutting, £600 for weedkiller and £400 for line marking.

1.29 From the research carried out for this study, the following sites are considered to be particularly vulnerable in terms of maintaining the current level of maintenance:

Football pitches

- Rock Park (Barnstaple Town Council)
- Killacleave Sports Field (Ilfracombe Academy)
- Woolsery Sports Club (Parish Council/club)

Cricket pitches

- Brimlands, Ilfracombe (Leased from rugby club)
- Chulmleigh Cricket Club (Parish council/club)
- King George V Playing Fields, Bideford (Local authority)
- High Bickington Playing Fields (Parish Council)

Rugby pitches

- Barnstaple RFC (Bridge Fields – leased from DCC)
- South Molton RFC, Station Road (Club)

1.30 Addressing the reduction in capacity which may ensue from poor maintenance could take one of two forms – the provision of additional pitches (although where would the maintenance budget for these come from?) or financial support for the clubs and town and parish councils (perhaps banding together) to enable them to carry out necessary maintenance. Either of these options will require careful consideration and joined-up thinking between relevant clubs, NGBs (National Governing Bodies for Sport), Sport England, the local authorities and the town and parish councils.

D What if (single pitch) local authority sites were removed due to budget cuts?

1.31 Excluding school sites, single pitch sites tend to be either village recreation grounds, usually run by the town or parish councils or maybe leased to the clubs, or stadium type pitches leased to clubs. They are common in rural areas and it is noticeable that Torridge has a high number of single pitch sport sites. In most areas, loss of the parish/town council sites would mean that teams currently playing could not be accommodated.

North Devon

- In the Barnstaple sub area: out of 8 sites (excluding schools), 2 are single pitch sites – Beechfield (Parish Council) and Barnstaple Town FC. The loss of Beechfield (for Fremington Youth FC) would mean the teams had nowhere to play.
- In the Braunton sub area: out of 3 non school sites, 2 are single pitch sites, both managed by Parish Councils (Braunton Recreation Ground and Georgeham Recreation Ground)
- Ilfracombe sub area: out of 3 non school sites, 2 are single pitch sites: Combe Martin FC's ground at Holland Park is owned by the PC. The other site – Malborough Park – is owned by Ilfracombe Town FC.
- There are three non school single pitch sites in the South Molton sub area: one of which - Chittlehampton Playing Field - is run by the Parish Council

Torridge

- In the Bideford sub area out of 10 sites excluding schools, 8 are single pitch and 5 are run by Parish Councils. The three non Parish Council sites are Bideford Sports Ground (Bideford FC), Marshford FC, Appledore and Northam Lions FC.
- In the Great Torrington sub area, out of 6 non school sites, 5 are single pitch sport sites and all run by the Parish Council with the exception of Torrington FC (leased to club).
- In the Holsworthy sub area, out of 6 non school sites, 5 are single pitch sport sites, all run by the Parish Council (jointly with the school in the case of Bradworthy), apart from Shebbear FC.

E What if further sports development initiatives or alternative forms of a sport are introduced?

1.31 Within football, two important considerations are the growth of junior football and the growth in 5-a-side teams and leagues. Generally in the study area, junior football is played on pitches which are the appropriate size, albeit with smaller 7v7 and 5v5 pitches marked out with cones or overmarked on 9v9 and small youth pitches. However, going forward the key will be for new provision to be flexible, enabling different configurations of pitch sizes. It is recommended that any new site for football should be large enough to accommodate two adult pitches with run offs, which can be reconfigured or remarked to accommodate smaller youth pitches as appropriate (requiring a site of at least 2 hectares).

1.32 It could be an option to put smaller goals on underused adult pitches but there are very few sites where the adult pitches are underused and there is a demand for more junior provision. A possible exception is the adult pitch at King George V Playing Fields in Bideford which could accommodate more Bideford AFC Youth matches.

1.33 A growth in 5-a-side teams may require additional surfaces. At present a considerable amount of small sided soccer is played in sports halls, and some on the 3G FTP at Bideford College. Soccersixes are the largest FA affiliated five and six aside league network in the UK. They operate 2 leagues at Park School, Barnstaple operating for two hours on Monday and Thursday evenings and they run a league on Wednesday evening for one hour from Bideford College. However, new full size provision needs to become established before the need for additional provision can be predicted.

1.34 In cricket, rugby and hockey, other sports development initiatives will add pressure where capacity is being reached. For example, the promotion of T20 cricket may increase the demand for non turf wickets, particularly in the Barnstaple and Bideford sub areas. The strategy addresses where additional rugby pitches are needed to meet growth in demand for junior sides and additional training facilities.

1.35 However, certainly any growth in female teams – girls and women – across the sports of football and rugby will require additional, dedicated changing facilities to meet their requirements and this is currently restricting such development at some sites.

F What if all pitches on private grounds and/or without security of tenure were no longer available?

1.36 This does not appear to be an issue in North Devon and Torridge. Filleigh CC is situated on a private estate but security of tenure has not been raised as an issue.

Other scenarios

1.37 Other scenarios include the following:

RMB Chivenor, near Braunton

1.38 This is an MOD site with restricted access. Site comprises: adult football pitch, second football pitch (unmarked with portable goals), unmarked rugby pitch with posts in place and poor quality artificial cricket strip. Football and rugby is on the cricket outfield. The grass pitches (Football and Cricket) are outside the wire and are therefore available for community use. Grass football pitches are currently used by Chivenor FC. The cricket pitch is not currently used.

1.39 The 3G FTP (which is of World Class Rugby standard) is ‘inside the wire’ and is not available for community use. This situation is unlikely to change. It has apparently been used by a soccer school in the past.

1.40 If community access to this AGP could be secured it is likely to have a considerable influence on the pattern of play and demand for additional AGP provision in the Barnstaple and Braunton sub areas. However, Chivenor is not proposed to be decommissioned until the late 2020s and therefore cannot realistically be taken into account in this strategy.

1.41 Nevertheless, it is important that communication between North Devon Council and RMB Chivenor continues and that the sporting facilities here should be protected and as far as possible be safeguarded for community use as appropriate in the future.

What if new pitches are provided on a specific new or existing site?

1.42 There are a number of proposals in various stages of implementation including:

North Devon

- New rugby pitch for South Molton RFC – land acquired
- New football pitch for South Molton FC – land partially acquired
- Fremington Army Camp – new adult football pitch
- Ilfracombe Southern Extension – 2 football pitches (possibly at primary school): potential for including cricket pitch

Torridge

- Football pitches (adult and junior) as part of Winsford development

1.43 The above proposals have been taken into account in discussing the requirements for new pitches.

APPENDIX 2: ENSURING PROVISION AND AVAILABILITY OF APPROPRIATE FACILITIES TO MEET DEMAND TO 2031 IN NORTH DEVON AND TORRIDGE

Information to support main Strategy document Section 4.

Football

2.1 This Strategy Appendix 2 sets out a number of tables which present the number of additional football teams to be accommodated in North Devon and Torridge to the end of the plan period (2031). The Needs Assessment documents set out in detail how these numbers have been calculated.

2.2 Tables 7 and 8 are for each district as a whole:

A Population growth through new housing. For this, we have calculated the current team generation rates in each district (i.e. the number of men or women in a particular age group required to generate one team) and applied this to the future population projected to arise from new housing.

B Trends in participation: this reflects views of NGBs and trends in the way the sports are played as to the type of teams which are likely to increase or decrease.

C Latent demand and aspirations this takes account of where there is demand to form teams which cannot currently be satisfied (e.g. if there are no pitches) and where clubs have indicated that they would like to form teams if facilities were available (with agreement of NGBs).

Table 7: Total number of new teams projected to be generated 2016 – 2031 in North Devon

	Reason for more teams	Men's teams	Ladies' teams	Youth male	Youth female	Minis
A	Population growth through new housing	6.9	0.4	6.1	0.9	6.3
B	Trends in participation	-2		2	3	2
C	Latent demand and aspirations	5	1	4	2	2
D	TOTAL	9.9	1.4	12.1	5.9	10.3

Table 8: Total number of new teams projected to be generated 2016 – 2031 in Torridge

	Reason for more teams	Men's teams	Ladies' teams	Youth male	Youth female	Minis
A	Population growth through new housing	8.2	0.2	5.4	0.7	4.7
B	Trends in participation	-2		2	3	2
C	Latent demand and aspirations	4	1	2	2	2
D	TOTAL	10.2	1.2	9.4	5.7	8.7

2.3 Tables 9 and 10 take the total of each type of team in each district and apportion them on a sub area basis, according to each category A, B and C.

Table 9: Number of new (additional) football teams predicted to 2031 in North Devon by sub area

Sub area	Men's teams	Ladies' teams	Youth male	Youth female	Minis
Barnstaple	5.8	1.2	5.9	2.5	4.4
Braunton	0.0	0.0	1.5	1.0	1.3
Ilfracombe	1.9	0.1	2.2	0.7	2.2
South Molton	2.2	0.1	2.5	1.7	2.4
Total	9.9	1.4	12.1	5.9	10.3

Table 10: Number of new (additional) football teams predicted to 2031 in Torridge by Sub area

Sub area	Men's teams	Ladies' teams	Youth male	Youth female	Minis
Bideford	7.4	1.2	6.2	2.5	5.7
Great Torrington	1.6	0.0	1.7	1.6	1.6
Holsworthy	1.2	0.0	1.5	1.6	1.4
Total	10.2	1.2	9.4	5.7	8.7

Cricket

2.4 The total number of new cricket teams predicted to be generated through population growth, trends in participation, latent/unmet/displaced demand and aspirations in North Devon and Torridge is shown below:

Table 11: Total number of new cricket teams projected to be generated in North Devon 2016 - 2031

Reason for more teams	Men's teams	Ladies' teams	Youth teams
Population growth through new housing	7	0.4	5.1
Trends in participation			+2
Latent/unmet/displaced demand	+1		
Aspirations	+1		+1
TOTAL Number of new teams	9	0.4	8.1

Table 12: Total number of new teams projected to be generated in Torridge 2016 - 2031

Reason for more teams	Men's teams	Ladies' teams	Youth teams
Population growth through new housing	3		1.6
Trends in participation			+1
Latent/unmet/displaced demand	+1		
Aspirations	+1	+1	+3
TOTAL Number of new teams	5	1	5.6

Rugby

2.5 The total number of new rugby teams predicted to be generated through population growth, trends in participation, latent/unmet/displaced demand and aspirations in North Devon and Torridge is shown below:

Table 13: Total number of new rugby teams projected to be generated in North Devon 2016 – 2031

Reason for more teams	Men's teams	Ladies' teams	Youth teams	Mini Teams
Population growth through new housing	1.4		1.6	3.6
Trends in participation			1	
Latent/unmet/displaced demand				
Aspirations	1	1	3	1
TOTAL Number of new teams	2.4	1	5.6	4.6

Table 14: Total number of new rugby teams projected to be generated in Torridge 2016 – 2031

Reason for more teams	Men's teams	Ladies' teams	Youth teams	Mini Teams
Population growth through new housing	1.4	0.2	2.3	1.2
Trends in participation			1	
Latent/unmet/displaced demand				
Aspirations			1	1
TOTAL Number of new teams (rounded)	1.4	0.2	4.3	2.2

Hockey

2.6 There are currently no hockey teams in Torridge, but we have applied the North Devon TGRs to the expected population growth in Torridge. Demand generated by people

moving into new housing in the districts, together with changes in participation trends, latent and unmet demand and the aspirations of clubs suggests that an additional 2 men's, 2 ladies and 3 youth teams will be created by 2031 across North Devon and 1 men's, 1 ladies and 1 junior teams in Torridge (although these will only be able to play in North Devon at present).

APPENDIX 3: PRIORITY PROJECTS IN NORTH DEVON AND TORRIDGE

(NOT in Priority Order)

Information to support main Strategy document Section 5.

A: Provision of 3G FTP in Barnstaple

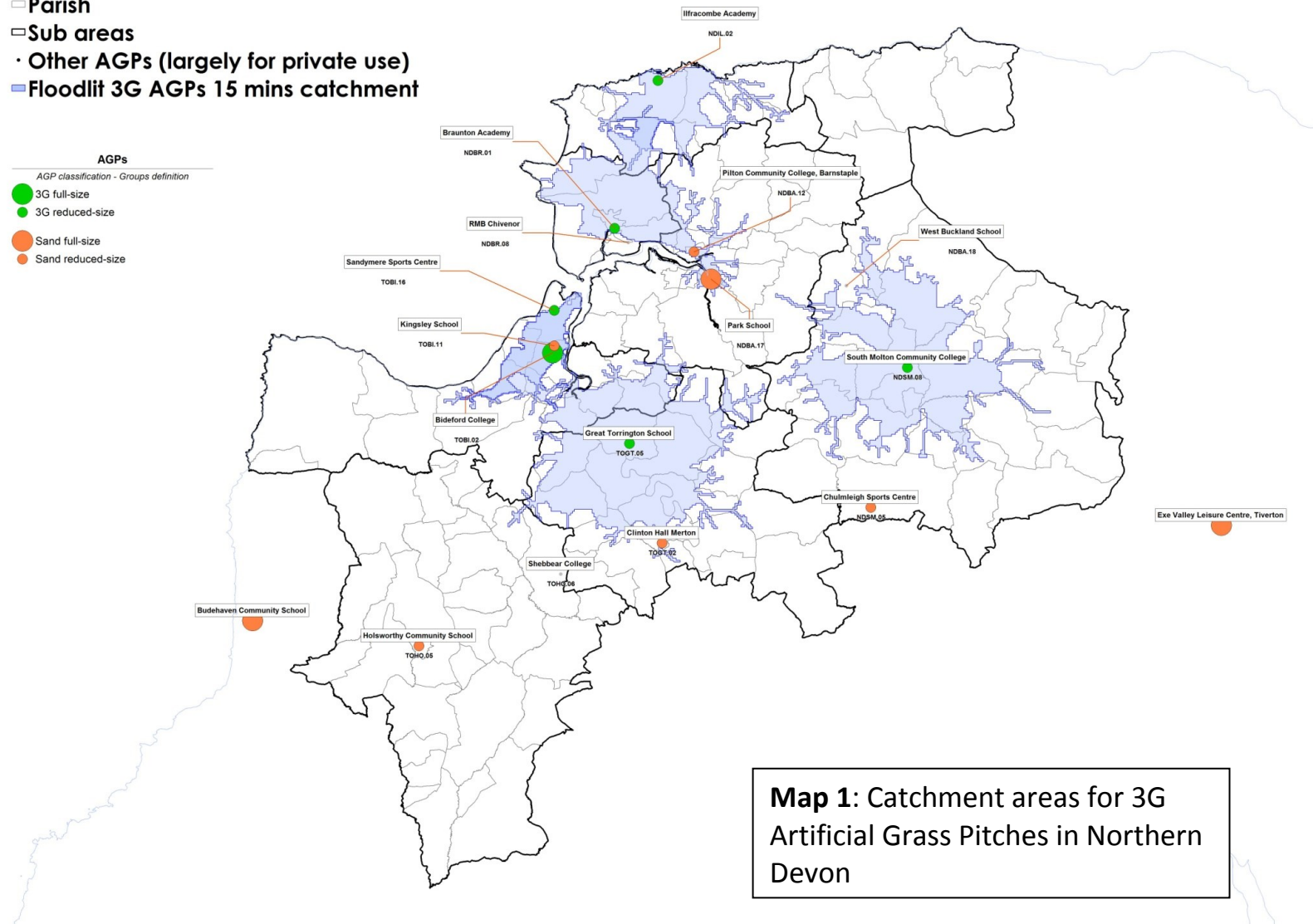
Explanation of the Issue

3.1. The key points are:

- There is no full size 3G Football Turf Pitch serving the Barnstaple Area. See Map 2 below. The nearest full size 3G FTP is at Bideford College but this is not accredited for matchplay by the FA.
- There are two half size 3G FTPs in North Devon which are both on the FA Register – at Braunton and South Molton Community Colleges. Barnstaple Town FC trains at South Molton half size 3G.
- A significant number of clubs are already training on 3G pitches where available. There appears to be demand from many clubs, which are not currently using them, for 3G training facilities; there is anecdotal evidence that teams find it hard to find weekday evening slots for training.
- There is little spare capacity for weekday evening slots for football training – either on sand based or 3G AGPs anywhere in North Devon.
- There is also demand for 3G FTP facilities for central venue hubs to accommodate youth disability football and girls football.
- Any growth in demand for 3G training facilities will require new provision. This demand will come from the teams generated by new housing provision as well as from any general growth in participation.
- As a guide the FA suggest that 1 full size FTP could potentially accommodate this training demand from 42 teams (Ratio of 1:42). There are 74 teams in the Barnstaple and Braunton sub areas.
- Analysis of demand for matchplay suggests that around 5 full size 3G FTPs would be required in Barnstaple to accommodate all teams for matches. However at present the FA target is 50% of all junior and mini matches by 2020. The analysis in Section 4.4.12 finds that 2 full size 3G FTPs will be required in the Barnstaple and Braunton sub areas to meet this demand.
- Based on the evidence available, the Needs Assessment concludes that there is sufficient demand to support the provision of a full size 3G FTP in Barnstaple (subject to a full feasibility study and business plan).
- Pilton Community College, PETROC and Lampard (Special Needs) School all wish to be considered as a potential day time users of a 3G at Tarka Tennis Centre if this project progresses. Two adult clubs have expressed interest in becoming anchor clubs at a new 3G FTP.
- The provision of a 3G FTP in Barnstaple will also assist provision for hockey in North Devon (see Priority 7).

- Parish
- Sub areas
- Other AGPs (largely for private use)
- Floodlit 3G AGPs 15 mins catchment

- AGPs**
- AGP classification - Groups definition*
- 3G full-size
 - 3G reduced-size
 - Sand full-size
 - Sand reduced-size



B Provision of additional and appropriate facilities for football in Barnstaple

Explanation of Issue

3.2 The key points are:

- The total number of additional teams expected in 2031 in the Barnstaple sub area, taking into account aspirations, latent demand and trends in participation is: 5.8 senior teams, 1.2 women's teams, 5.9 junior boys teams, 2.5 girls teams and 4.4 mini teams. It is not realistic to disaggregate this number further on an individual settlement basis.
- New housing on its own in the Barnstaple sub area as a whole is likely to generate 3.6 senior teams, 0.2 female teams, 3.2 junior football teams, 0.5 girls teams and 3.3 mini teams. Teams coming forward in the following specific settlements are:

Table 15: Predicted new teams from new housing in Barnstaple sub area parishes

	Landkey	Tawstock (incl. Roundswell)	Fremington	Barnstaple & Pilton West
Senior football (16-45 male)	1.0	0.9	0.8	0.8
Senior football (16-45 female)	0.1	0.0	0.0	0.0
Junior football (10-15 male)	0.9	0.8	0.7	0.7
Junior football (10-15 female)	0.1	0.1	0.1	0.1
Mini-soccer (6-9 mixed gender)	1.0	0.8	0.7	0.8

N.B. Please note that the above table does not list all the parishes in the Barnstaple sub area and therefore totals will not equal the totals given in para 3.2

3.3 Other points are:

- There is only room for 1 more Saturday adult team to be accommodated within the town, at Barnstaple Town FC. However, there is also space available at Rock Park for 6 adult teams or 4 adult teams if 1 pitch remains for Junior use.
- Of the junior pitches available, there is only room for one extra junior team at present – at Rock Park on the 9v9 pitch (although pitch sizes could be changed to accommodate an adult pitch(es)).
- Tews Lane in Roundswell, home to Barnstaple Youth FC, is effectively full and any increase in teams from new housing would struggle to be accommodated.
- Only one football pitch at Seven Brethren appears to be used; there is another adult pitch there not being used as both pitches cannot be played on at once.
- A 3G FTP in Barnstaple could accommodate up to 6 home adult teams for play on a Saturday and up to 10 youth/mini teams, depending on ages and fixture requirements on Sundays.
- Eastside Youth FC also struggles to find pitches – it has 4 teams which play at Tanners Road, Landkey and which also use The Park School 7v7 pitch, AGP and sports hall for matches and training. Ideally the club would like one site which could accommodate all its teams with an adult and 9v9 pitch as a minimum.

- There is a longstanding ambition to develop a playing field with pitch facilities in Swimbridge.
- New housing is scheduled in Roundswell (971 houses) (Tawstock parish). The facilities at Tews Lane, Roundswell are currently at capacity and the site is surrounded by housing.
- There is no provision in Tawstock at present. Tawstock PC have expressed the need for a kickabout area.

C Provision of additional and appropriate facilities for rugby in Barnstaple

Explanation of Issue

3.4 In rugby, training usually takes place on the pitches and this must be fully taken into account in any assessment of the usage and capacity of the pitches. The key points for Barnstaple RFC are:

- The site at Mill Road, Pottington comprises: two senior pitches (neither of which is floodlit) and a floodlit training pitch on the main part of the site and a large junior pitch (Pitch 3), 3 mini pitches and a training area on Bridge Field, with floodlights along one side. Pitches 1 and 2 are used for matches only, Pitch 3 is used for matches and training.
- Thriving club running 4 adult, 5 youth and 12 mini teams. The amount of teams and training activity demonstrates that all pitches are overplayed, by the equivalent of up to 2.5 matches per week on the match pitches.
- Club's lack of funds means they cannot maintain/improve pitch to standard they would like.
- Club say that amount of use and standard of floodlighting prevent expansion of playing/training activities. They identify a lack of off-site training facilities in Barnstaple. For 10 winter weeks, all junior and some senior training takes place at Bideford College 3G FTP.
- Capacity of the changing rooms is an issue with changing when several teams playing at home.
- Shortage of car parking is an ongoing issue for all teams using the Mill Road/Pottington site.

D Provision of additional and appropriate facilities for football in Fremington

Explanation of issue

3.5 The key points are:

- The only adult pitch in Fremington - at Beechfield - is being overplayed, supporting 2 adult and 2 older youth sides and up to 3 other youth sides from Fremington Youth FC. There is no peak time spare capacity.
- Fremington Youth uses 2 x 7v7 pitches at Sticklepath Primary School, essential to the running of the club. This is through informal links with the school and there is no CUA.

- 1 senior, 1 junior and 1 mini team will be generated by new housing in Fremington to 2031.
- New pitch being provided at Fremington army camp for 2018/19 season, which is 200m across main road from Beechfield. Senior team (not linked formally with Youth FC although discussions are taking place) will use this pitch.
- The development on the former Fremington Army Camp site has secured the conversion of buildings for community building and changing rooms.
- Issue regarding changing – condemned at Beechfield and not thought that changing at Fremington Camp will be ready for when the new pitch is (2018/19). PC is looking at how to provide adequate changing for the interim period – possibly with portacabins.
- PC also looking at the management of the MUGA with floodlights at Fremington Camp which is also being provided for 2018/19.
- Fremington Youth FC would ideally like one facility to cover all their youth team requirements to include matches and training and run as a community sports hub. They are looking to run additional two youth teams next season. Ideally require 1 x 11v11 pitch and 2 9v9 pitches with options for overmarking as 7v7 and 5v5.

E Provision of additional and appropriate facilities for football, rugby and cricket in Ilfracombe

Explanation of issue

3.6 The key points are:

Football

- The total number of additional football teams expected in 2031 in the Ilfracombe sub area, taking into account aspirations, latent demand and trends in participation is: 1.9 senior teams, 0.1 women's teams, 2.2 junior boys teams, 0.7 girls teams and 2.2 mini teams. It is not realistic to disaggregate this number further on an individual settlement basis.
- In Ilfracombe itself, new housing is likely to generate the following new teams by 2031: 1.1 senior men's teams; 0.1 senior ladies' teams; 1.0 junior boys teams; 0.1 junior girls teams and 1.0 mini soccer teams.
- There is 1 spare slot – i.e. room for 2 new Saturday adult teams and 1 spare slot (for 2 junior teams) – in the Ilfracombe sub area but this is accounted for by Meadow Playing Fields, Woolacombe where the pitches are being reinstated now that the club has reformed.
- There is no spare capacity at peak time in Ilfracombe itself (at either Malborough Park or Killacleave). The pitches at Killacleave are being overplayed: two adult pitches are sustaining 1 adult, 7 junior and 3 mini teams and there is very little spare capacity or room for growth.
- The pitch at Brimlands (which does not meet the recommended requirement for adult 11v11 according to the new FA guidance, but does meet the recommended Youth u13/u14 11v11 size) is not currently used for football.

- The junior 9v9 pitch at Ilfracombe Academy (Worth Road) has a Community Use Agreement but is currently not used; it therefore has capacity and would support junior teams.
- There are no mini pitches recorded in this sub area.
- This is a key area with great potential to grow, with all football provision in Ilfracombe itself, apart from Ilfracombe Town FC's pitch at Marlborough Park, being on land owned by Ilfracombe Academy.

Rugby and Cricket

- Ilfracombe RFC is based at Brimlands (it leases the site from NDC) and has one full size rugby pitch. It also uses the football pitch, which is marked out with cones for rugby minis/youth on Sunday mornings.
- The cricket club also uses Brimlands; it plays on a standard quality NTW (there is no grass pitch). The club have submitted plans for 2 NTWs which would reduce the size of the football pitch to a 9v9 pitch. There are no other facilities for cricket in Ilfracombe currently in use; there is a poor quality (redundant) NTW at Killacleave.

F Protecting and developing facilities for hockey in North Devon

Explanation of issue

3.7 The key points are:

- Hockey activity in North Devon and Torridge starts from a low base. There are two clubs, running 4 teams between them (North Devon HC: 2 men's and Tav Valley Ladies HC: 2 ladies). Although there are juniors in the squads there are, as yet, no junior teams.
- Part of the reason for this may be because there is only one full size floodlit sand based AGP in the district suitable for matchplay, at The Park School in Barnstaple.

Training

- The Park School facility is the only full size AGP of any surface in Barnstaple and as such attracts considerable football training activity. It has no spare capacity for training on midweek evenings, with 10 hours of 14 'peak time' hours allocated for football, and 4 for hockey.
- The new floodlit sand based AGP at Kingsley School Bideford is slightly undersize for matchplay but is suitable for training facilities and the school is keen to encourage this use.
- However, most expansion in the demand for hockey training facilities in Barnstaple will come at the expense of football and at present there are few alternative venues for football training in the area – only the half size sand AGP at Pilton Community College which similarly has little spare capacity midweek evenings.
- Growth in the informal offer for hockey will also be restricted through the lack of spare capacity on weekday evenings. Both hockey clubs in North Devon have accepted the Back to Hockey informal offer and it is hoped that sessions will start at Kingsley School.

Matchplay

- It is estimated that up to 2 men's, 2 women's and 3 youth teams could form up to 2031 in North Devon and 1 men's, 1 women's and 1 youth team in Torrington, which equates to three more matches per weekend as a minimum.
- This cannot currently be accommodated on the Park Community School AGP, with the current level of football use (it is used for football for 3 hours on Saturdays, with hockey matches scheduled for 4 hours).

G Demand for additional 3G provision in Bideford

Explanation of Issue

3.8 The key points are:

- The total number of additional teams expected in 2031 in the Bideford sub area, taking into account aspirations, latent demand and trends in participation is: 7.4 senior teams, 1.2 women's teams, 6.2 junior boys teams, 2.5 girls teams and 5.7 mini teams. It is not realistic to disaggregate this number further on an individual settlement basis.
- There is a 3G FTP in Torrington at Bideford College which although not full size is just large enough to accommodate adult play. It is virtually full with football training but because it is not FA accredited it cannot host matchplay.
- The College are very keen to have the pitch accredited but cannot pay for this.
- There is anecdotal evidence that the cost of hiring the Bideford College 3G FTP is perceived as high and may be deterring some users.
- As a guide the FA suggest that 1 full size FTP could potentially accommodate this training demand from 42 teams (Ratio of 1:42). There are 47 teams in the Bideford sub area.
- Analysis of demand for matchplay suggests that around 3 full size 3G FTPs would be required in Bideford to accommodate all teams for matches. However at present the FA target is 50% of all junior and mini matches by 2020. The analysis in Section 4.4.13 finds that just under 2 full size 3G FTPs will be required in the Bideford sub area to meet this demand.
- Other training facilities in the area comprise Sandymere (which is full with own club's use – Bideford Blues and Appledore) and a sand based AGP at Kingsley School, on which community use is still building up and which may accommodate some football training next season.
- There is little spare capacity for weekday evening slots for football training on the existing 3G AGP at Bideford College. It is not yet known how many teams will train on the sand based pitch at Kingsley School next season, although this may be considerable; The Park School in Barnstaple is almost fully booked for football training on weekday evenings. Some demand may also be met by the proposed 3G MUGA at Bideford Sports Ground.
- Any substantial growth in demand for training on 3G AGPs however will require new provision. There is a relatively large projected increase in the number of teams which will be generated from new housing in Bideford which will require

training facilities, in addition to teams which cannot access such facilities at present.

- Bideford RFC minis u7train at Bideford College every week; juniors and seniors also train there on alternate weekly basis. For 5 weeks before & 5 weeks after Christmas, Barnstaple RFC hires Bideford College for all junior and some senior rugby training. Bideford RFC requires additional facilities for training to prevent overplay and damage to its two pitches.
- *If Bideford College AGP is available for matchplay:*
 - Insufficient demand identified for full size 3G FTP in Bideford. Smaller, ideally rugby compliant, training facility is required (cost savings): preferred location at the Cattle Market, adjacent to King George V.
 - Works can start very soon with Torridge District Council committing funds.
 - Number of additional pitches required in Torridge reduced.
- *If Bideford College AGP is not available for matchplay:*
 - Sufficient demand for full size 3G FTP in Bideford. Site to be identified.
 - Meets demand for football, and for some rugby training. If upgraded to World Class rugby facility would also cater for rugby matchplay.
 - If not rugby matchplay compliant, rugby club will still require second outside grass pitch in King George V Playing Fields.

H Meeting the needs of Bideford RFC and other sports using King George V Playing Fields

Explanation of Issue

3.9 The key points are:

- King George V Playing Fields is a public recreation space in the town centre, currently catering for cricket, football and rugby.
- There is one rugby pitch marked out adjoining the stadium rugby pitch for Bideford RFC which is overplayed. The two pitches used by Bideford RFC are sustaining 4 adult, 8 youth and 5/6 mini teams plus training, with an average of 6 or 7 matches per weekend. Both pitches are operating beyond reasonable capacity. (The KGV pitch hosts junior and mini training and junior and mini matches (alternating) equivalent to 3.75 matches a week, with a capacity of 2 matches).
- Bideford RFC's focus is on improving the quality of its second pitch in KGV by securing a long lease so it can assume responsibility for maintenance and to provide floodlights for this pitch to move training off the stadium pitch.
- There is a grass square with 10 wickets and a NTW. There is considerable spare capacity at this ground but whether this is due to quality of the pitch and ancillary facilities or just falling member numbers (the club did run two teams up until recently) is hard to establish.
- The cricket club say significant deterioration of facilities in recent years has made it difficult to attract new players and future of club is in doubt. There is now just one Sunday team playing 10 games per season.

- There are two football pitches: an adult pitch located to the south of the site next to the bowling green and a junior 9v9 to the north of the cricket pitch on the cricket outfield.
- The adult pitch is used by one Saturday team and has spare capacity (although some junior matches may take place here). The junior 9v9 pitch on the cricket outfield is overmarked as 7v7 and 5v5 when required. This pitch is overused; it is sustaining a total of 11 junior teams run by Bideford Youth AFC from u16 – u8, playing 66 matches in total. The club has over 300 youth members. It also uses Bideford Sports Ground and Moreton Park (Bideford College – one adult pitch).
- Bideford AFC Youth hires 3 different venues (here, Bideford College (Moreton Park) and Bideford Sports Ground) and training facilities to meet all its needs. It would like a single hub site to meet all provision.

I Provision of adequate and appropriate facilities for football in Bideford and Northam

Explanation of issue

3.10 The key points are

- The total number of additional teams expected in 2031 in the Bideford sub area, taking into account aspirations, latent demand and trends in participation is: 7.4 senior teams, 1.2 women’s teams, 6.2 junior boys teams, 2.5 girls teams and 5.7 mini teams. It is not realistic to disaggregate this number further on an individual settlement basis.
- In the individual parishes of Bideford and Northam, new housing is likely to generate the following new teams by 2031:

Table 16: Predicted new teams from new housing in Bideford sub area parishes

	Bideford	Northam
Senior football (16-45 male)	4.1	2.1
Senior football (16-45 female)	0.1	0.1
Junior football (10-15 male)	2.7	1.4
Junior football (10-15 female)	0.4	0.2
Mini-soccer (6-9 mixed gender)	2.4	1.2

N.B. Please note that the above table does not list all the parishes in the Bideford sub area and therefore totals will not equal the totals given in para 3.10

- There are currently 4 adult football pitches with community use in Bideford – Bideford Sports Ground, Moreton Park (Bideford College), KGV Playing Fields and Pollyfield, East the Water. There is one junior pitch, at KGV Playing Fields. (Elsewhere in the sub area there are adult pitches at Marshford and Northam and Sandymere (one each) and a 9v9 pitch and half size 3G FTP at Sandymere too).
- There is room for an additional 4 adult Saturday teams in the Bideford sub area but only one Saturday team in Bideford itself – at King George V Playing Field in Bideford – at present.

- The junior pitch at King George V Playing Field is being overplayed by the equivalent of 3 junior teams at peak time.
- The junior pitch at Sandymere is technically overplayed, but seems to be just about managing, with some teams playing on the 3G half size AGP and by using the adult pitch.
- There are no mini pitches being used for mini football.
- The adult pitch at Moreton Park (Bideford College) is overused, according to the community adult team which plays here; and is not always prepared correctly which can create problems with referees or the league. Security of tenure is an issue, as this is primarily a school pitch without a CUA.
- Bideford AFC Youth hires 3 different venues (King George V Playing Fields in Bideford, Bideford College (Moreton Park) and Bideford Sports Ground) and training facilities to meet all its needs. It would like a single hub site to meet all provision.
- There is no spare capacity for Saturday adult teams in Northam (or in Appledore or Sandymere).
- There is insufficient capacity at present to accommodate expected growth in the number of teams in Bideford and Northam to 2031.

Table 17: Distances between pitch sites in Bideford sub area

	Bideford sports ground	Northam Lions	Marshford	Pollyfield	Sandymere
Bideford Sports Ground		1.0 mile	2.5 miles	1.0 mile	2.1 miles
Northam Lions	1.0 mile		1.5 miles	2.3 miles	0.9 miles
Marshford	2.5 miles	1.5 miles		3.3 miles	1.3 miles
Pollyfield	1.0 mile	2.3 miles	3.3 miles		2.9 miles
Sandymere	2.1 miles	0.9 miles	1.3 miles	1.9 miles	

J New ground for Bideford, Littleham & Westward Ho! CC

Explanation of Issue

3.11 The key points are:

- Bideford, Littleham and Westward Ho! CC is a long established cricket club . The cricket pitch is rated as good; it has 15 grass wickets and a NTW.
- The club runs 4 adult and 6 youth teams with a range of senior and junior representative matches.
- However, the poor condition of ancillary facilities would suggest ground is effectively at capacity. There are also issues around the insurance risk, with balls being hit onto adjacent properties.

- The club feels it cannot expand membership or cater for community or sporting needs and offer facilities more widely unless major upgrades take place to pavilion and other facilities. It wishes to relocate to a new site and its aspirations are supported by the Devon Cricket Board which identifies this as a priority project.
- New housing in the Bideford sub area would suggest the need for an additional cricket pitch in Bideford to 2031. This could be addressed by the provision of a double cricket pitch site – one pitch as a replacement for B, L & WHO! CC and one to meet future demand.

K Provision of additional and appropriate facilities for football and rugby in South Molton

Explanation of Issue

- South Molton RFC and South Molton FC have identified the need for additional pitches and facilities. Whilst South Molton Rugby Club is split over three sites, it has secured a fourth site for a junior pitch which is now fully funded. Further aspirations to secure additional pitches and facilities at the new site are still required, but a phased approach to delivery was agreed owing to securing funding for each stage and delivering a manageable project.
- South Molton Football Club own their site, but only have one pitch and basic changing provision. Lack of pitch space can result in overplayed pitches and reduced ability for club development, even though demand is present. Land has been identified but yet to be purchased owing to requirement for funding. The football club have first refusal on the land.
- South Molton's population is scheduled to increase during the life of the Strategy by around 3,650 people (from a projected increase of 1659 dwellings) which will add further pressure to the existing provision. The requirement for football and rugby facilities is identified in the emerging North Devon and Torrington Local Plan.
- A project to develop a sports hub, adjacent to South Molton Community College, has been widely discussed within the town. The concept initially involved South Molton Rugby Club and South Molton Football Club relocation to the new sports hub site, but other clubs and groups have embraced the proposal, and come forward with their club requirements to create a multi sport site.
- The proposed hub site is located to the Southern edge of the town and spans an area of 9 hectares in size. Clubs involved in the project and potential sports include comprise South Molton FC, South Molton Rugby Club, South Molton Strugglers (running), tennis, cycling and racquet sports (in college sports hall).
- South Molton Community College has recently been rebuilt and has a sports hall, grass rugby and football pitches and a floodlit half size 3G AGP. The college is supportive of community sports use and hosts sessions by local clubs. It is keen to see practical measures in place to enable further use of its changing provision, sports facilities and car parking, subject to appropriate safeguarding measures in place and revenue to cover costs.