



Re: Bratton Fleming Neighbourhood Plan

Bratton Fleming Parish Council wish to apply to have the area shown on the attached map designated as a Neighbourhood Area in accordance with the provisions of Part 2 of The Neighbourhood Planning (General) Regulations 2012.

This area, which coincides with the parish boundary, is believed to represent the optimum area for the proposed Neighbourhood Plan to cover. The village of Bratton Fleming is the main area within the parish where development is likely to take place, but to limit the geographic scope of the plan to the village alone would fail to recognise the function of the village as a hub for the surrounding rural hinterland.

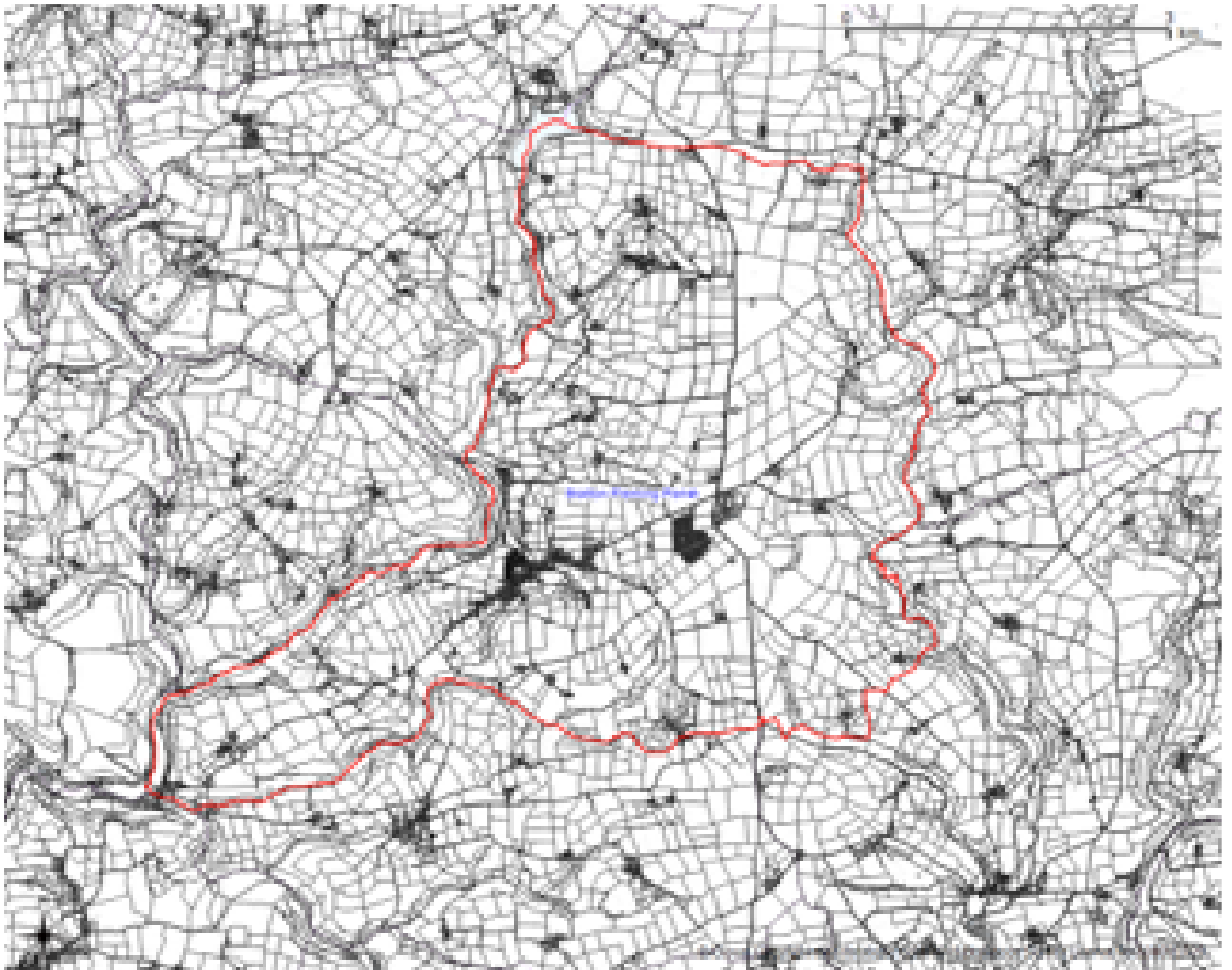
It could be argued that this hub function extends to areas beyond the parish boundary, but it is felt that it would be more appropriate to recognise this by involving neighbouring parishes in the consultative steering group for the proposed plan, rather than seeking to extend the plan area into other parishes.

Informal soundings taken throughout the parish area indicate a widespread feeling that the plan should cover the whole parish and reflect the aspirations of those living in Bratton Fleming village and also those living in more sparsely populated countryside areas.

It is confirmed that Bratton Fleming Parish Council is a relevant body for the purposes of section 61G of the Town and Country Planning Act 1990 (as amended).

Neighbourhood Plan Area

The area for the Neighbourhood Plan is the area within the Parish boundary.



Process

The process by which Bratton Fleming Parish Council intends to deliver the Neighbourhood Plan is shown, at the high level, by the flow diagram shown in Figure 1.

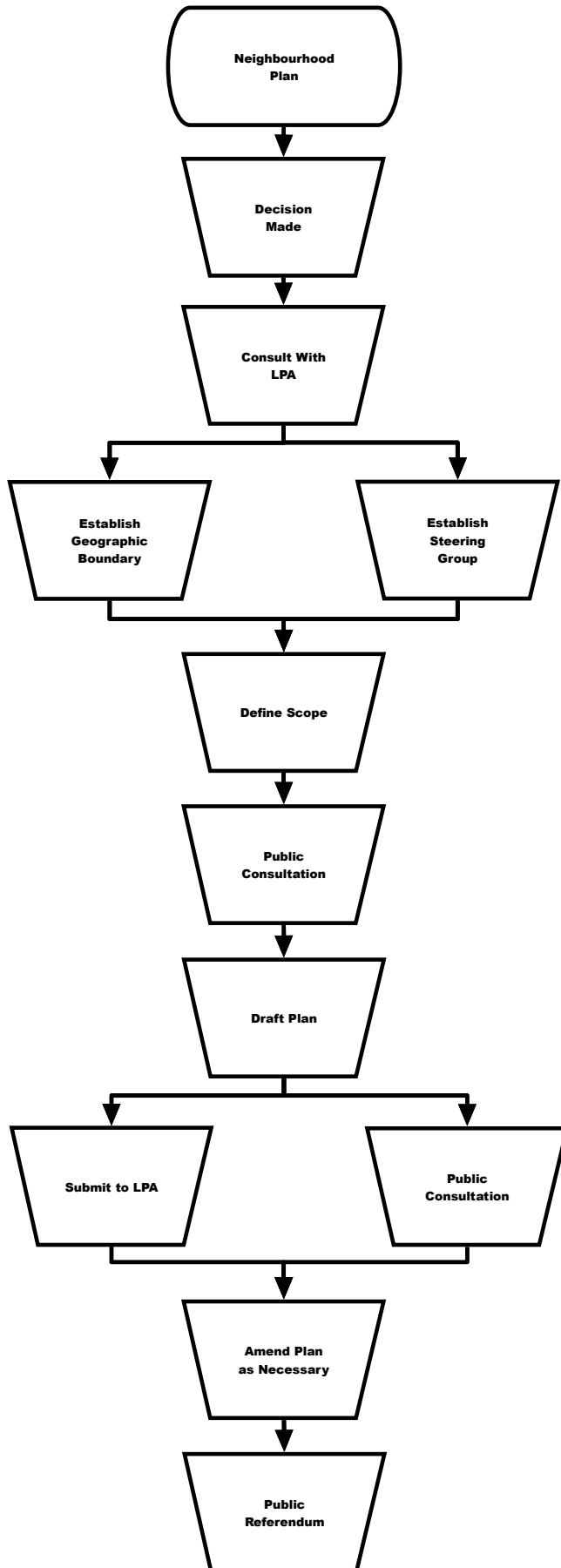


Figure 1 Neighbourhood Plan Flow Diagram