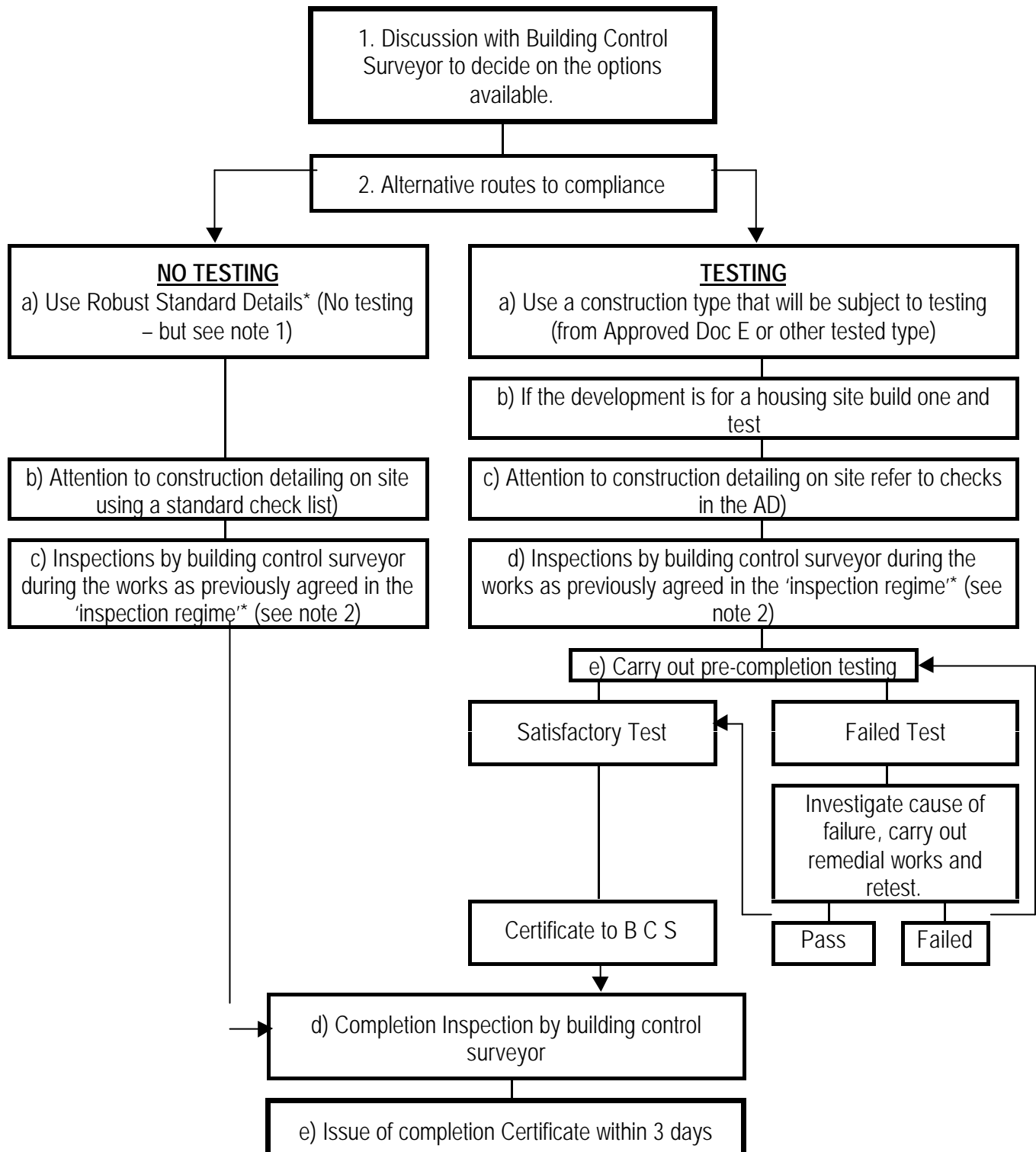


Building Control Services

Advice Note 10 - PROCEDURE FOR ACHIEVING ADEQUATE SOUND INSULATION TO PART E1

NEW BUILD



- * Note 1 - Robust Standard Details are the subject of a consultation document from the ODPM with a recommendation to adopt them as an alternative to testing from January 2004.
- * Note 2 - The Building Control Surveyor will arrange to carry out inspections as agreed with the developer.