

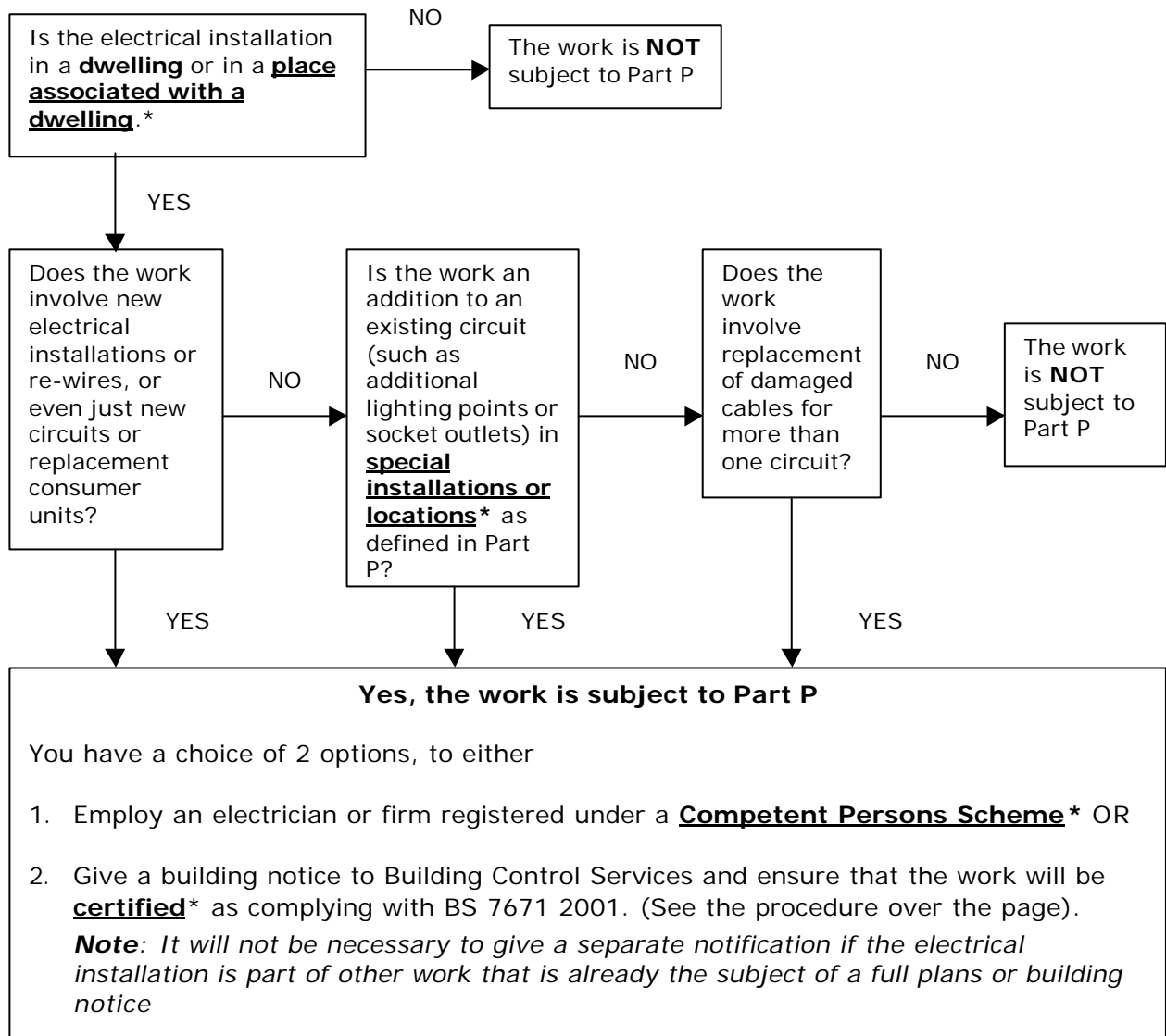
Building Control Services

Advice Note 18 – Part P – Electrical Safety

From January 1st 2005, electrical installations in or associated with dwellings will be subject to the building regulations and must comply with Part P.

This includes the installation of a new circuit, any work in a kitchen or **special location** (or is a **special installation**)* and any work undertaken outside the property (for example, in a garage or garden).

The following should help you decide what you need to do. (Also see table over the page)



(**Definitions*** are given overleaf).

Use the table below as a further check of whether a Notification is required

Examples of work	The location of the installation may decide whether it is necessary to Notify - see below	
	Areas outside of bath/ shower rooms and kitchens	Within a bath/shower room or kitchen (special location)
Complete new/rewire of installation	Yes	Yes
Consumer unit change	Yes	Yes
Installing a new shower circuit	Yes	Yes
Installing an additional socket	No	Yes
Installing an additional light	No	Yes
Addition of fused connection unit to ring final circuit	No	Yes
Installing a new cooker circuit	Yes	Yes
Connecting a cooker to an existing connection unit	No	No
Installing or upgrading main or supplementary equipotential bonding	No	Yes
Replacing a damaged cable for a single circuit	No	No
Replacing a damaged socket outlet	No	No
Replacing a light fitting	No	No
Installation and fit of a storage heater, including final circuit	Yes	Yes
Fit and final connection of storage heater	No	No
Installing extra low voltage lighting (not CE marked sets)	Yes	Yes
Taking a new supply out to a garden shed	Yes	N/A
Installing a socket in a garden shed	Yes	N/A
Installing a light fitting in a greenhouse	Yes	N/A
Installing a pond pump, including Supply	Yes	N/A
Installing a hot air sauna	Yes	Yes
Installing a solar photovoltaic power supply	Yes	Yes
Installing ceiling or floor heating	Yes	Yes
Installing a small scale generator	Yes	Yes
Installing an additional socket in a motor caravan	N/A	N/A

Appendix 1 - Definitions

Special locations and installations - Locations containing a bath tub or shower basin, swimming pools or paddling pools, hot air saunas, electric floor or ceiling heating systems, garden lighting or power installations, solar photovoltaic (PV) power supply systems, small scale generators such as microCHP units, extra-low voltage lighting installations, other than pre-assembled, CE-marked lighting sets.

Work in or **associated with a dwelling** means work

- in a dwelling or
- in the common part of a building containing a dwelling (not a power supply to a lift), or
- in a building that receives its electricity from a source located within or shared with a dwelling, or
- in a garden or in or on land associated with a building where the electricity is from a source located within or shared with a dwelling (this includes ponds and sheds)

Competent Persons Scheme

Persons registered with the Government's Competent Person Scheme are able to self-certify that their work meets the requirements of The Building Regulations and are not required to deposit a formal notification with the Local Authority.

Certified

Persons carrying out electrical installation work that is subject to Part P must adhere to the 'Fundamental principles' for achieving safety given in BS 7671:2001 Chapter 13. When giving notification to the Local Authority (Building Control Services) it will be necessary to provide a valid certificate to this effect.